



Compressor  
Voltage Code : FZ

**AJ4480P-FZ**

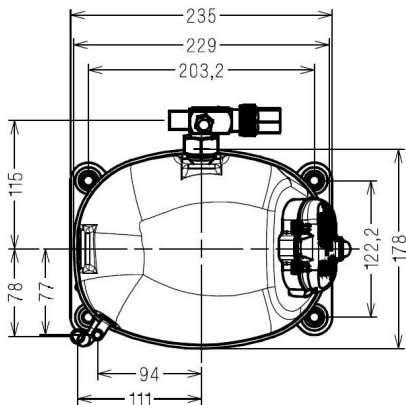
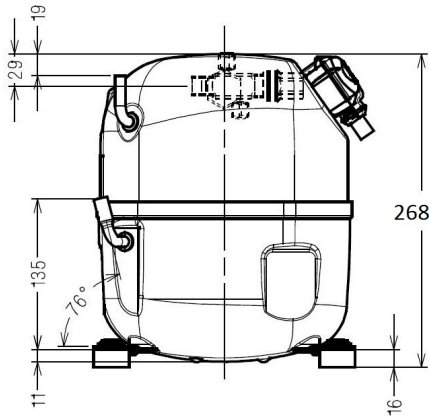
High Temp. Commercial (HP)

220 - 240V 1~ 50 Hz

R455A / R454C

**AJ4480P-FZ3A**

Conditions	Frequency	Nominal Cooling Capacity		Sound Power ISO3745 / ISO 3743-1
		Watts	BTU/h	
CECOMAF / R455A	50 Hz	1840	6275	61 dBA
CECOMAF / R454C	50 Hz	1634	5572	61 dBA



\* CECOMAF : T°Cond. 55.0°C / T°Evap. 5.0°C / T°Return gas temp.. 32.0°C  
T°Subcooling. 0.0K

Certificates :



<b>Displacement (cc)</b>	15,2
<b>Net Weight (Kg)</b>	19,7
<b>Oil Quantity (cc)</b>	475,0
<b>Oil Type</b>	Polyolester
<b>Expansion Device</b>	Capillary_Tube/Expansion_Valve
<b>Cooling</b>	Fan
<b>Main Winding (Ohm)</b>	3,8
<b>Start Winding (Ohm)</b>	12,5
<b>Current</b>	
RLA (A)	3,7
MCC (A)	5,9
LRA (A)	24,1
<b>Electrical Equipment</b>	CSR
<b>Overload</b>	MST22ALK
Time Check	7.5s - 14s / 15.3 A
Open Temp	105° C
Close Temp	61° C
<b>Start Capacitor</b>	88 µF / 250 V
<b>Run Capacitor</b>	15 µF / 400 V
<b>Potential Relay</b>	RVA4I**
Pick Up	204/233V
Drop Out	50/110V
<b>Refrigerating connection for</b>	
Suction Tube	12.7 (1/2")
Discharge Tube	7.9 (5/16")
Process Tube	6.35 (1/4")

Note : Tecumseh reserves the right to change information contained in this document without notification.



**Tecumseh**

<b>AJ4480P-FZ</b>	<b>Tension FZ : 220 - 240V 1~ 50 Hz</b>
-------------------	---

Les performances sont données dans les <b>conditions CECOMAF</b> :	Gaz aspirés :	32.0 °C
Condition Mid	Sous refroidissement :	0.0 K
The performance data are in <b>CECOMAF conditions</b> :	Return gas :	32.0 °C
Mid Condition	Subcooling :	0.0 K

© 2022 Tecumseh Products Company  
All rights reserved

### 50 Hz R455A

**N°3274**

4   T condensation	5   T évaporation	(°C)	-25	-20	-15	-10	-5	0	5	10	15
<b>30</b>	1   P frigorifique	(Watt)		960	1244	1580	1975	2436	2971	3587	4293
	2   P absorbée	(W)		490	532	570	602	627	644	653	651
	3   I absorbée	(A)		2.34	2.53	2.70	2.84	2.95	3.03	3.07	3.07
<b>40</b>	1   P frigorifique	(Watt)			1014	1307	1651	2053	2520	3060	3681
	2   P absorbée	(W)			563	617	665	708	742	768	784
	3   I absorbée	(A)			2.67	2.92	3.14	3.33	3.49	3.62	3.70
<b>50</b>	1   P frigorifique	(Watt)				1033	1324	1666	2065	2530	3068
	2   P absorbée	(W)				644	713	775	830	877	914
	3   I absorbée	(A)				3.04	3.36	3.65	3.90	4.13	4.31
<b>60</b>	1   P frigorifique	(Watt)					1006	1287	1618	2007	2462
	2   P absorbée	(W)					735	821	900	971	1033
	3   I absorbée	(A)					3.46	3.86	4.23	4.56	4.85

### 50 Hz R454C

**N°3275**

4   T condensation	5   T évaporation	(°C)	-25	-20	-15	-10	-5	0	5	10	15
<b>30</b>	1   P frigorifique	(Watt)		826	1076	1372	1720	2128	2601	3146	3769
	2   P absorbée	(W)		455	493	527	557	581	600	613	619
	3   I absorbée	(A)		2.16	2.33	2.49	2.63	2.73	2.81	2.84	2.84
<b>40</b>	1   P frigorifique	(Watt)			886	1145	1448	1803	2216	2693	3242
	2   P absorbée	(W)			521	569	612	649	680	705	722
	3   I absorbée	(A)			2.46	2.68	2.88	3.06	3.20	3.31	3.37
<b>50</b>	1   P frigorifique	(Watt)				916	1174	1475	1827	2237	2711
	2   P absorbée	(W)				597	658	713	761	802	836
	3   I absorbée	(A)				2.81	3.09	3.35	3.57	3.76	3.92
<b>60</b>	1   P frigorifique	(Watt)					906	1153	1444	1785	2184
	2   P absorbée	(W)					685	761	830	892	946
	3   I absorbée	(A)					3.19	3.54	3.87	4.16	4.41

1 = cooling capacity 2 = power input 3 = current 4 = condensing temperature 5 = evaporating temperature

**Nota : Tecumseh se réserve le droit de modifier les informations contenues dans ce document sans préavis.**

**Note : Tecumseh reserves the right to change information contained in this document without notification.**