

Compressor
Voltage Code : FZ

AE4430P-FZ1A

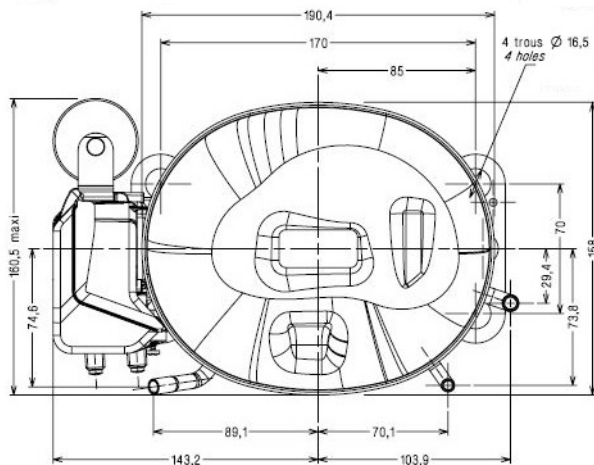
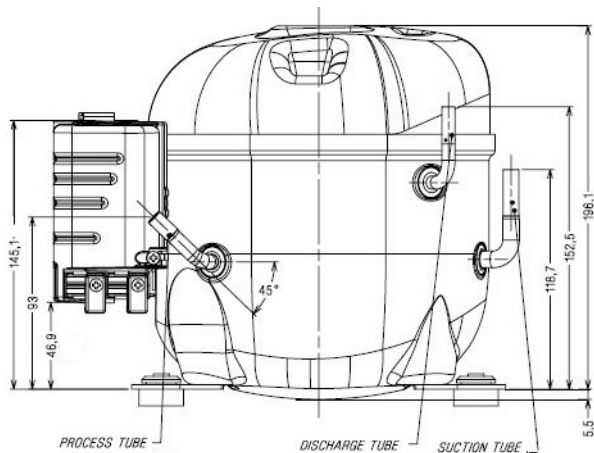
High Temp. Commercial (HP)

220 - 240V 1~ 50 Hz

R455A / R454C

AE4430P-FZ1A

Conditions	Frequency	Nominal Cooling Capacity		Sound Power ISO3745 / ISO 3743-1
		Watts	BTU/h	
CECOMAF / R455A	50 Hz	642	2189	55 dBA
CECOMAF / R454C	50 Hz	594	2026	55 dBA



* CECOMAF : T°Cond. 55.0°C / T°Evap. 5.0°C / T°Return gas temp.. 32.0°C
T°Subcooling. 0.0K

Certificates :



Displacement (cc)	5,16
Net Weight (Kg)	9,7
Oil Quantity (cc)	280,0
Oil Type	Polyolester
Expansion Device	Capillary_Tube or Expansion_Valv
Cooling	Fan
Main Winding (Ohm)	8,3
Start Winding (Ohm)	21,1
Current	
RLA (A)	2
MCC (A)	2,6
LRA (A)	12,0
Electrical Equipment	CSIR
Overload	MRA58207
Time Check	6.5s - 16s / 7,5 A
Open Temp	115° C
Close Temp	61° C
Start Capacitor	64 µF / 330 V
Current Relay	9660C-***-130
Pick Up	5.30A
Drop Out	4.45A
Refrigerating connection for	
Suction Tube	6.35 (1/4")
Discharge Tube	4.76 (3/16")
Process Tube	6.35 (1/4")

Note : Tecumseh reserves the right to change information contained in this document without notification.



Tecumseh

AE4430P-FZ1A	Tension FZ : 220 - 240V 1~ 50 Hz
---------------------	---

Les performances sont données dans les conditions CECOMAF :	Gaz aspirés :	32.0 °C
Condition Mid	Sous refroidissement :	0.0 K
The performance data are in CECOMAF conditions :	Return gas :	32.0 °C
Mid Condition	Subcooling :	0.0 K

© 2021 Tecumseh Products Company
All rights reserved

50 Hz R455A

N°3221

4 T condensation	5 T évaporation	(°C)	-25	-20	-15	-10	-5	0	5	10	15
30	1 P frigorifique	(Watt)		355	445	555	688	844	1026	1235	1475
	2 P absorbée	(W)		194	207	219	228	234	235	229	216
	3 I absorbée	(A)		1.74	1.77	1.80	1.82	1.83	1.83	1.81	1.76
40	1 P frigorifique	(Watt)			373	468	581	714	869	1049	1254
	2 P absorbée	(W)			227	242	256	267	275	277	273
	3 I absorbée	(A)			1.81	1.85	1.89	1.92	1.94	1.95	1.95
50	1 P frigorifique	(Watt)				381	476	587	717	868	1041
	2 P absorbée	(W)				259	278	297	312	324	330
	3 I absorbée	(A)				1.89	1.95	2.00	2.05	2.10	2.13
60	1 P frigorifique	(Watt)					371	461	567	690	832
	2 P absorbée	(W)					290	316	341	363	381
	3 I absorbée	(A)					1.98	2.06	2.14	2.22	2.29

50 Hz R454C

N°3215

4 T condensation	5 T évaporation	(°C)	-25	-20	-15	-10	-5	0	5	10	15
30	1 P frigorifique	(Watt)		315	398	500	622	766	933	1125	1344
	2 P absorbée	(W)		185	196	207	215	220	221	216	204
	3 I absorbée	(A)		1.71	1.73	1.76	1.78	1.80	1.80	1.79	1.75
40	1 P frigorifique	(Watt)			331	420	525	650	795	962	1153
	2 P absorbée	(W)			209	223	237	248	255	258	256
	3 I absorbée	(A)			1.76	1.79	1.83	1.86	1.88	1.89	1.88
50	1 P frigorifique	(Watt)				344	433	538	661	803	966
	2 P absorbée	(W)				238	256	273	287	298	305
	3 I absorbée	(A)				1.82	1.87	1.92	1.97	2.00	2.02
60	1 P frigorifique	(Watt)					342	427	527	644	779
	2 P absorbée	(W)					270	293	314	334	349
	3 I absorbée	(A)					1.91	1.98	2.05	2.12	2.17

1 = cooling capacity 2 = power input 3 = current 4 = condensing temperature 5 = evaporating temperature

Nota : Tecumseh se réserve le droit de modifier les informations contenues dans ce document sans préavis.

Note : Tecumseh reserves the right to change information contained in this document without notification.