



Compressor
Voltage Code : GZ

CAJ4492Y-GZ

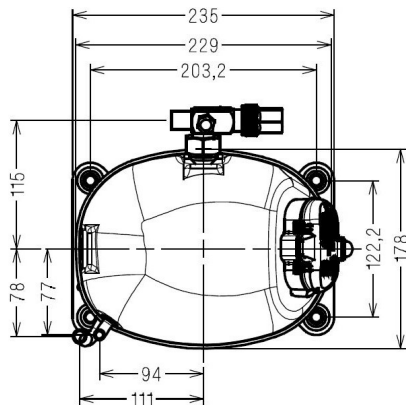
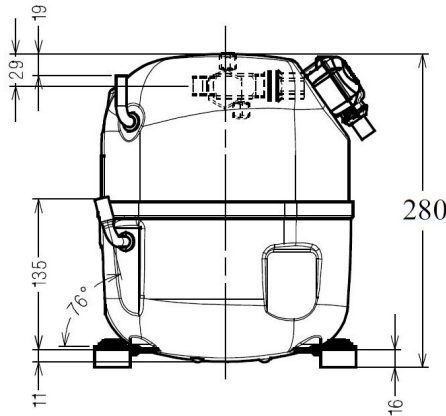
High Temp. Commercial (HP)

208 - 220V 1~ 50 Hz

R134a

AJ4492Y-GZ1B

Conditions	Frequency	Nominal Cooling Capacity		Sound Power ISO3745 / ISO 3743-1
		Watts	BTU/h	
EN12900_HP / R134a	50 Hz	2087	7116	57 dBA



Displacement (cc)	25,95
Net Weight (Kg)	19.6
Oil Quantity (cc)	475.0
Oil Type	Polyolester
Expansion Device	Capillary_Tube/Expansion_Valve
Cooling	Fan
Main Winding (Ohm)	2.3
Start Winding (Ohm)	16.0
Current	
RLA (A)	6.2
MCC (A)	9.5
LRA (A)	32
Electrical Equipment	CSIR
Overload	T0859
Time Check	2.8s - 5.2s / 29 A
Open Temp	135° C
Close Temp	69° C
Start Capacitor	88 µF / 330 V
Potential Relay	RVA4AQ**
Pick Up	318/347V
Drop Out	60/121V
Refrigerating connection for	
Suction Tube	12.7 (1/2")
Discharge Tube	7.9 (5/16")
Process Tube	6.35 (1/4")

* EN12900_HP : T°Cond. 50.0°C / T°Evap. 5.0°C / T°Return gas temp.. 20.0°C
T°Subcooling. 0.0K

Certificates :



Note : Tecumseh reserves the right to change information contained in this document without notification.



Tecumseh

CAJ4492Y-GZ	Tension GZ : 208 - 220V 1~ 50 Hz
--------------------	-----------------------------------------

Les performances sont données dans les conditions EN12900_HP : Condition Dew	Gaz aspirés : 20.0 °C Sous refroidissement : 0.0 K
The performance data are in EN12900_HP conditions : Dew Condition	Return gas : 20.0 °C Subcooling : 0.0 K

50 Hz R134a

N°214LS-GZ

4 T condensation	5 T évaporation	(°C)	-25	-20	-15	-10	-5	0	5	10	15
30	1 P frigorifique	(Watt)	607	848	1132	1464	1853	2305	2826	3425	4107
	2 P absorbée	(W)	446	508	563	613	658	699	738	775	812
	3 I absorbée	(A)	4.87	4.96	5.06	5.17	5.29	5.42	5.56	5.72	5.88
40	1 P frigorifique	(Watt)	438	668	933	1238	1591	1999	2469	3007	3621
	2 P absorbée	(W)	426	510	587	657	722	782	839	893	945
	3 I absorbée	(A)	4.69	4.86	5.04	5.23	5.43	5.64	5.87	6.10	6.35
50	1 P frigorifique	(Watt)		471	715	991	1308	1670	2087	2564	3108
	2 P absorbée	(W)		482	585	681	770	854	934	1010	1083
	3 I absorbée	(A)		4.78	5.04	5.31	5.60	5.89	6.20	6.52	6.85
60	1 P frigorifique	(Watt)			487	733	1011	1327	1689	2103	2576
	2 P absorbée	(W)			555	681	800	913	1020	1123	1223
	3 I absorbée	(A)			5.06	5.42	5.78	6.16	6.55	6.95	7.36

© 2024 Tecumseh Products Company
All rights reserved

1 = cooling capacity 2 = power input 3 = current 4 = condensing temperature 5 = evaporating temperature

Nota : Tecumseh se réserve le droit de modifier les informations contenues dans ce document sans préavis.
Note : Tecumseh reserves the right to change information contained in this document without notification.