

TAKE CONTROL WITH FASTER FLOW.

VALVE CORE REMOVAL TOOLS

FASTER RECOVERY, VERIFIED.

Since every system and installation is different, we designed three valve core removal tools to help techs recover, evacuate and charge systems faster and with confidence, every time.

A **SIGHT GLASS** on VC1GE/VC2GE lets you visually verify the valve core is engaged before removing it, as well as confirm refrigerant is flowing.

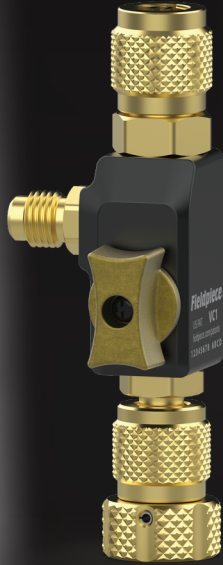
A **DUAL BALL VALVE** VC2GE is key when using multiple hose lines or attaching vacuum and pressure gauges.

And for tight spaces, the **ULTRA-COMPACT** VC1E is your go-to.

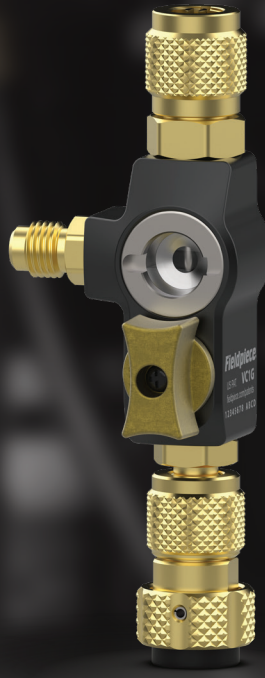
More benefits in each essential tool include:

- **A LOCKED-IN VALVE CORE** in one try, with a gasket securing the valve core pin
- **REDUCED TOOL COUNT** with swappable service port fittings (1/4" and 5/16")
- **EASIER REMOVAL AND INSERTION** against pressure with a free-spinning, rubber cap that is also a magnet (VC1GE/VC2GE)





VC1E



VC1GE



VC2GE

VCRT SPECIFICATIONS

Feature	VC1E	VC1GE	VC2GE
<i>A2L Compatible</i>	●	●	●
<i>Valve Core Capture Gasket</i>	●	●	●
<i>Swappable Service Port Fitting, 1/4" and 5/16" Standard</i>	●	●	●
<i>Magnetic Cap</i>	●	●	●
<i>Free-spinning, Comfort Cap</i>		●	●
<i>Sight Glass</i>		●	●
<i>Dual Ball Valves</i>			●
<i>Vacuum Rated</i>	20 microns	20 microns	20 microns
<i>Dimensions</i>	107.95 x 39.62 x 38.10 mm	128.52 x 50.8 x 38.10 mm	128.52 x 66.80 x 38.10 mm