



Compressor  
Voltage Code : FZ

**AJ4461N-FZ**

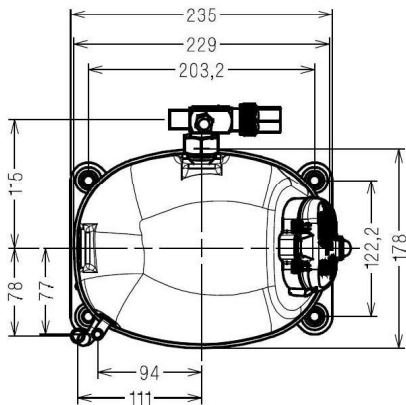
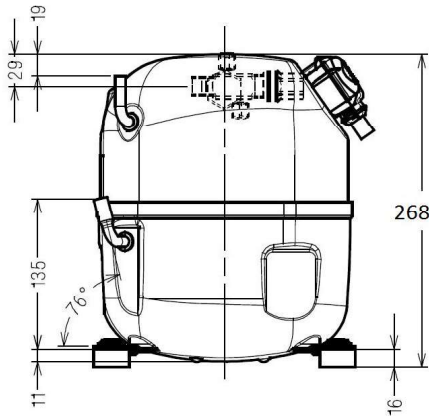
High Temp. Commercial (HP)

220 - 240V 1~ 50 Hz

R1234yf / R134a / R513A

**AJ4461N-FZ1A**

Conditions	Frequency	Nominal Cooling Capacity		Sound Power ISO3745 / ISO 3743-1
		Watts	BTU/h	
CECOMAF / R1234yf	50 Hz	1301	4436	54 dBA
CECOMAF / R134a	50 Hz	1352	4611	54 dBA
CECOMAF / R513A	50 Hz	1370	4673	54 dBA



\* CECOMAF : T°Cond. 55.0°C / T°Evap. 5.0°C / T°Return gas temp.. 32.0°C  
T°Subcooling. 0.0K

Certificates :



<b>Displacement (cc)</b>	18,3
<b>Net Weight (Kg)</b>	18,4
<b>Oil Quantity (cc)</b>	475,0
<b>Oil Type</b>	Polyolester
<b>Expansion Device</b>	Capillary_Tube/Expansion_Valve
<b>Cooling</b>	Fan
<b>Main Winding (Ohm)</b>	3,9
<b>Start Winding (Ohm)</b>	20,6
<b>Current</b>	
RLA (A)	4
MCC (A)	6,1
LRA (A)	19,4
<b>Electrical Equipment</b>	CSIR
<b>Overload</b>	MST24ALK
Time Check	2.8s - 5.2s / 20.6 A
Open Temp	105° C
Close Temp	61° C
<b>Start Capacitor</b>	64 µF / 330 V
<b>Potential Relay</b>	RVA40**
Pick Up	280/310V
Drop Out	60/121V
Optional	/
<b>Refrigerating connection for</b>	
Suction Tube	12.7 (1/2")
Discharge Tube	6.35 (1/4")
Process Tube	6.35 (1/4")

Note : Tecumseh reserves the right to change information contained in this document without notification.



**Tecumseh**

<b>AJ4461N-FZ</b>	<b>Tension FZ : 220 - 240V 1~ 50 Hz</b>
-------------------	---

Les performances sont données dans les <b>conditions CECOMAF</b> :	Gaz aspirés :	32.0 °C
Condition Dew	Sous refroidissement :	0.0 K
The performance data are in <b>CECOMAF conditions</b> :	Return gas :	32.0 °C
Dew Condition	Subcooling :	0.0 K

<b>50 Hz R1234yf</b>											
											<b>N°User-93</b>
4   T condensation	5   T évaporation	(°C)	<b>-25</b>	<b>-20</b>	<b>-15</b>	<b>-10</b>	<b>-5</b>	<b>0</b>	<b>5</b>	<b>10</b>	<b>15</b>
<b>30</b>	1   P frigorifique	(Watt)	458	618	811	1042	1316	1638	2015	2450	2950
	2   P absorbée	(W)	328	369	408	443	475	502	525	543	554
	3   I absorbée	(A)	2.71	2.82	2.95	3.07	3.20	3.31	3.42	3.50	3.55
<b>40</b>	1   P frigorifique	(Watt)		504	676	878	1116	1396	1723	2102	2538
	2   P absorbée	(W)		379	429	477	522	563	601	634	662
	3   I absorbée	(A)		2.86	3.03	3.19	3.36	3.52	3.67	3.80	3.91
<b>50</b>	1   P frigorifique	(Watt)			542	717	922	1161	1439	1763	2138
	2   P absorbée	(W)			440	500	559	615	667	716	761
	3   I absorbée	(A)			3.06	3.28	3.51	3.73	3.95	4.15	4.33
<b>60</b>	1   P frigorifique	(Watt)				560	733	932	1165	1435	1750
	2   P absorbée	(W)				512	585	656	725	791	853
	3   I absorbée	(A)				3.30	3.60	3.91	4.21	4.50	4.76

<b>50 Hz R134a</b>											
											<b>N°3285</b>
4   T condensation	5   T évaporation	(°C)	<b>-25</b>	<b>-20</b>	<b>-15</b>	<b>-10</b>	<b>-5</b>	<b>0</b>	<b>5</b>	<b>10</b>	<b>15</b>
<b>30</b>	1   P frigorifique	(Watt)	421	574	766	1003	1290	1636	2047	2528	3086
	2   P absorbée	(W)	304	346	385	422	455	485	511	534	554
	3   I absorbée	(A)	2.83	2.93	3.03	3.12	3.21	3.31	3.40	3.49	3.58
<b>40</b>	1   P frigorifique	(Watt)		487	655	862	1112	1412	1770	2192	2683
	2   P absorbée	(W)		360	410	458	503	545	585	621	655
	3   I absorbée	(A)		2.91	3.06	3.21	3.36	3.51	3.66	3.81	3.95
<b>50</b>	1   P frigorifique	(Watt)			544	719	931	1186	1491	1853	2278
	2   P absorbée	(W)			424	484	543	599	653	704	753
	3   I absorbée	(A)			3.08	3.29	3.49	3.70	3.90	4.11	4.31
<b>60</b>	1   P frigorifique	(Watt)				579	753	962	1214	1516	1874
	2   P absorbée	(W)				499	572	644	713	781	846
	3   I absorbée	(A)				3.35	3.61	3.88	4.14	4.40	4.66

1 = cooling capacity 2 = power input 3 = current 4 = condensing temperature 5 = evaporating temperature

**Nota : Tecumseh se réserve le droit de modifier les informations contenues dans ce document sans préavis.**  
**Note : Tecumseh reserves the right to change information contained in this document without notification.**

© 2024 Tecumseh Products Company  
All rights reserved



**Tecumseh**

<b>AJ4461N-FZ</b>	<b>Tension FZ : 220 - 240V 1~ 50 Hz</b>
-------------------	---

Les performances sont données dans les <b>conditions CECOMAF</b> :	Gaz aspirés :	32.0 °C
Condition Dew	Sous refroidissement :	0.0 K
The performance data are in <b>CECOMAF conditions</b> :	Return gas :	32.0 °C
Dew Condition	Subcooling :	0.0 K

<b>50 Hz R513A</b>											
											<b>N°3302</b>
4   T condensation	5   T évaporation	(°C)	<b>-25</b>	<b>-20</b>	<b>-15</b>	<b>-10</b>	<b>-5</b>	<b>0</b>	<b>5</b>	<b>10</b>	<b>15</b>
<b>30</b>	1   P frigorifique	(Watt)	495	658	857	1099	1392	1740	2150	2627	3176
	2   P absorbée	(W)	336	379	420	457	491	522	549	574	595
	3   I absorbée	(A)	2.83	2.93	3.03	3.12	3.21	3.31	3.40	3.49	3.58
<b>40</b>	1   P frigorifique	(Watt)		552	725	934	1184	1482	1834	2244	2719
	2   P absorbée	(W)		388	441	491	538	582	624	663	699
	3   I absorbée	(A)		2.91	3.06	3.21	3.36	3.51	3.66	3.81	3.95
<b>50</b>	1   P frigorifique	(Watt)			595	770	979	1228	1523	1869	2271
	2   P absorbée	(W)			450	514	576	636	693	749	802
	3   I absorbée	(A)			3.08	3.29	3.49	3.70	3.90	4.11	4.31
<b>60</b>	1   P frigorifique	(Watt)				610	779	980	1220	1502	1833
	2   P absorbée	(W)				526	605	682	757	831	903
	3   I absorbée	(A)				3.35	3.61	3.88	4.14	4.40	4.66

© 2024 Tecumseh Products Company  
All rights reserved

1 = cooling capacity 2 = power input 3 = current 4 = condensing temperature 5 = evaporating temperature

**Nota : Tecumseh se réserve le droit de modifier les informations contenues dans ce document sans préavis.**  
**Note : Tecumseh reserves the right to change information contained in this document without notification.**