



Compressor
Voltage Code : FZ

AJ4519P-FZ

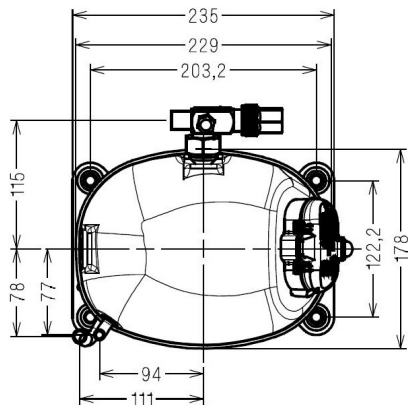
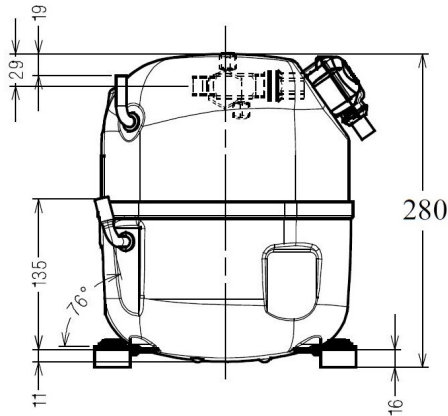
High Temp. Commercial (HP)

220 - 240V 1~ 50 Hz

R455A / R454C

AJ4519P-FZ3A

| Conditions | Frequency | Nominal Cooling Capacity | | Sound Power ISO3745 / ISO 3743-1 |
|-----------------|-----------|--------------------------|-------|-------------------------------------|
| | | Watts | BTU/h | |
| EN12900 / R455A | 50 Hz | 3923 | 13376 | 68 dBA |
| EN12900 / R454C | 50 Hz | 3682 | 12554 | 68 dBA |



* EN12900 : T°Cond. 50.0°C / T°Evap. 5.0°C / T°Return gas temp.. 20.0°C
T°Subcooling. 0.0K

Certificates :



| | |
|-------------------------------------|--------------------------------|
| Displacement (cc) | 34,45 |
| Net Weight (Kg) | 22.2 |
| Oil Quantity (cc) | 475.0 |
| Oil Type | Polyolester |
| Expansion Device | Capillary_Tube/Expansion_Valve |
| Cooling | Fan |
| Main Winding (Ohm) | 1.3 |
| Start Winding (Ohm) | 5.9 |
| Current | |
| RLA (A) | 8,8 |
| MCC (A) | 16,3 |
| LRA (A) | 48 |
| Electrical Equipment | CSR |
| Overload | T0770 |
| Time Check | 2.8s - 5.2s / 48.5 A |
| Start Capacitor | 100 µF / 250 V |
| Run Capacitor | 25 µF / 400 V |
| Potential Relay | RVA6M** |
| Pick Up | 239/268V |
| Drop Out | 60/135V |
| Refrigerating connection for | |
| Suction Tube | 15.9 (5/8") |
| Discharge Tube | 9.5 (3/8") |
| Process Tube | 6.35 (1/4") |

Note : Tecumseh reserves the right to change information contained in this document without notification.



Tecumseh

| | |
|-------------------|---|
| AJ4519P-FZ | Tension FZ : 220 - 240V 1~ 50 Hz |
|-------------------|---|

Les performances sont données dans les **conditions EN12900** :
 Condition Dew
 The performance data are in **EN12900 conditions** :
 Dew Condition

Gaz aspirés : 20.0 °C
 Sous refroidissement : 0.0 K
 Return gas : 20.0 °C
 Subcooling : 0.0 K

| 50 Hz R455A | | | | | | | | | | | |
|--------------------|--------------------|--------|-----|------|------|------|------|------|------|------|------|
| N°3282 | | | | | | | | | | | |
| 4 T condensation | 5 T évaporation | (°C) | -25 | -20 | -15 | -10 | -5 | 0 | 5 | 10 | 15 |
| 30 | 1 P frigorifique | (Watt) | | 1711 | 2231 | 2851 | 3586 | 4449 | 5456 | 6621 | 7958 |
| | 2 P absorbée | (W) | | 903 | 989 | 1075 | 1156 | 1228 | 1288 | 1333 | 1357 |
| | 3 I absorbée | (A) | | 5.12 | 5.49 | 5.84 | 6.16 | 6.45 | 6.71 | 6.92 | 7.09 |
| 40 | 1 P frigorifique | (Watt) | | | 1887 | 2435 | 3079 | 3834 | 4714 | 5734 | 6907 |
| | 2 P absorbée | (W) | | | 1048 | 1156 | 1266 | 1374 | 1476 | 1570 | 1651 |
| | 3 I absorbée | (A) | | | 5.81 | 6.29 | 6.75 | 7.19 | 7.61 | 7.99 | 8.33 |
| 50 | 1 P frigorifique | (Watt) | | | | 1989 | 2536 | 3176 | 3923 | 4791 | 5795 |
| | 2 P absorbée | (W) | | | | 1217 | 1348 | 1485 | 1623 | 1759 | 1889 |
| | 3 I absorbée | (A) | | | | 6.60 | 7.21 | 7.82 | 8.40 | 8.96 | 9.50 |
| 60 | 1 P frigorifique | (Watt) | | | | | 1983 | 2501 | 3109 | 3819 | 4647 |
| | 2 P absorbée | (W) | | | | | 1420 | 1578 | 1744 | 1915 | 2087 |
| | 3 I absorbée | (A) | | | | | 7.62 | 8.40 | 9.17 | 9.93 | 10.7 |

| 50 Hz R454C | | | | | | | | | | | |
|--------------------|--------------------|--------|-----|------|------|------|------|------|------|------|------|
| N°3283 | | | | | | | | | | | |
| 4 T condensation | 5 T évaporation | (°C) | -25 | -20 | -15 | -10 | -5 | 0 | 5 | 10 | 15 |
| 30 | 1 P frigorifique | (Watt) | | 1657 | 2143 | 2716 | 3388 | 4172 | 5081 | 6125 | 7318 |
| | 2 P absorbée | (W) | | 867 | 952 | 1030 | 1103 | 1170 | 1230 | 1285 | 1334 |
| | 3 I absorbée | (A) | | 4.91 | 5.27 | 5.62 | 5.96 | 6.29 | 6.61 | 6.92 | 7.22 |
| 40 | 1 P frigorifique | (Watt) | | | 1814 | 2325 | 2918 | 3606 | 4400 | 5314 | 6358 |
| | 2 P absorbée | (W) | | | 1021 | 1125 | 1225 | 1320 | 1411 | 1497 | 1579 |
| | 3 I absorbée | (A) | | | 5.55 | 5.98 | 6.40 | 6.81 | 7.22 | 7.62 | 8.02 |
| 50 | 1 P frigorifique | (Watt) | | | | 1903 | 2414 | 3003 | 3682 | 4462 | 5356 |
| | 2 P absorbée | (W) | | | | 1195 | 1321 | 1444 | 1564 | 1681 | 1796 |
| | 3 I absorbée | (A) | | | | 6.28 | 6.83 | 7.37 | 7.90 | 8.43 | 8.96 |
| 60 | 1 P frigorifique | (Watt) | | | | | 1892 | 2380 | 2940 | 3584 | 4326 |
| | 2 P absorbée | (W) | | | | | 1399 | 1550 | 1699 | 1846 | 1992 |
| | 3 I absorbée | (A) | | | | | 7.16 | 7.86 | 8.55 | 9.25 | 9.94 |

1 = cooling capacity 2 = power input 3 = current 4 = condensing temperature 5 = evaporating temperature

Nota : Tecumseh se réserve le droit de modifier les informations contenues dans ce document sans préavis.

Note : Tecumseh reserves the right to change information contained in this document without notification.

© 2022 Tecumseh Products Company
All rights reserved