



REFTECO

REFRIGERATION TECHNOLOGICAL COMPONENTS

AIR COOLERS

CONDENSERS

DRY COOLERS

SPECIAL PRODUCTS



DARMENT

www.darment.fi



Index

Air coolers	4
Accessories air coolers	11
Condensers	12
Dry coolers	14
Accessories condensers - dry coolers	16
Special products	17

The Company

A dynamic, young enterprise staffed with personnel with over twenty years' experience in the sectors of industrial refrigeration, air conditioning and process cooling.

For every project we propose solutions of high efficiency, minimizing the environmental impact of our customer's systems and guaranteeing the minimum CO2 emissions in the atmosphere.

Our mission is to ensure the maximum quality of our services at all times, whether they are concerned with food conservation or complex industrial cooling processes.

At Refteco our customers' expectations and those of the end users are our main concern and that means that we will always offer the most appropriate solution, insuring optimized investments, minimum environmental impact and maximum efficiency.

Our main goals are the following:

Innovation

Whether standard or special, our products are designed through the use of the most modern technological and information technologies. Our background of solid technical skills enables us to focus constantly on product innovation.

Quality

We ensure the quality of our products, selecting only parts and materials of certified reliability and following with the maximum attention to every stage of the production cycle and to the design, construction and testing off all the main product parts.

Flexibility

We are committed to handling and solving every type of problem promptly and professionally, in our customer's best interests whether they need specially designed solutions or can select standard products from our vast catalogue.

Service

Our goal is to satisfy the customer's needs in every way. We offer a series of support services not only for the clients but also for the engineers and installers of every stage and during the entire life cycle of the project. Our after-sales staff is always willing and able to provide answers and rapid, qualified solutions to every type of problem.

Angled air cooler REA / RGA



Angled air coolers super compact for small storage cold rooms with volume from 10 to 50 m³. Thanks their heavy metal construction they are suitable for storage of fresh or frozen food with temperature from -25 to +20°C.

0,5 – 4,2 kW

Main features:

Fluid refrigerants HFC's and glycol
 12 different models
 Fin spacing 4 – 6 – 8 mm
 Fan diameter 250 mm
 Number fans 1 – 4
 Defrost: electric, hot gas in the coil and electric in the drip tray

Cubic air cooler REC / RGC / RAI / RBC



Cubic air coolers super compact for small and medium storage cold rooms with volume from 20 to 600 m³. Thanks their heavy construction they are suitable for storage of fresh or frozen food with temperature from -30 to +20°C.

1 – 78 kW

Main features:

Fluid refrigerants HFC's, Glycol and CO₂
 436 different models
 Fin spacing 4 – 5 – 6 – 7 – 8 – 10 mm
 Fan diameter 250 – 350 – 450 – 500 – 630 mm
 Air volume 1500 – 62000 m³/h
 Defrost: electric, hot gas in the coil and electric in the drip tray

Dual discharge air cooler REDC / RGDC / RBDC



Range of dual discharge air coolers suitable for working and handling rooms or small and medium storage cold rooms with volume from 20 to 200 m³. Thanks their reduced height they are recommended for installations in low rooms or in limited space between conveyor and ceiling.

0,4 – 39 kW

Main features:

Fluid refrigerants HFC's, Glycol and CO₂
 27 different models
 Fin spacing 4 – 6 – 8 mm
 Fan diameter 230 – 350 – 450 mm
 Number fans 1 – 5
 Defrost: electric, hot gas in the coil and electric in the drip tray

Industrial cubic unit coolers for medium and big storage cold rooms with volume from 200 to 2500 m³. This range of air coolers has developed for heavy duty for cooling and storage of fresh or frozen food with temperature from -40 to +20°C.

15 – 167 kW

Main features:

Fluid refrigerants HFC's, Glycol, NH₃ and CO₂
 9000 different models
 Fin spacing 4 – 6 – 7 – 8 – 10 – 12 mm
 Fan diameter 500 – 560 – 630 – 710 – 800 mm
 Air volume 7600 – 83000 m³/h
 Defrost: electric, light electric, hot gas, hot glycol, water, combined defrosts
 Heat exchanger: L configuration with square geometry with high ratio between the secondary fins surface and primary tubes surface, suitable for cold rooms with high humidity and freezing process. S configuration with staggered geometry with high specific cooling capacity, suitable for cold rooms with low humidity or packed products.

Cubic air cooler REI / RGI / RAI / RBI



Dual discharge air cooler **REDI / RGDI / RADII / RBDI**

Dual discharge air coolers suitable for working and handling rooms or small and medium storage cold rooms with volume from 150 to 1600 m³. This line of air coolers has developed for heavy duty for cooling and storage of fresh or frozen food with temperature from -40 to +20°C.

14 – 93 kW

Main features:

Fluid refrigerants HFC's, glycol, NH₃ and CO₂
 156 different models
 Fin spacing 4 – 6 – 7 – 8 – 10 mm
 Fan diameter 500 – 630 mm
 Air volume 7200 – 59000 m³/h
 Defrost: electric, light electric, hot gas, hot glycol, water, combined defrosts

Evaporator for heat pump **REP**

Split evaporators suitable for outdoor installation of heat pump split systems. This line of evaporator has developed for heavy duty with ambient temperature from -15°C. Thanks the hoods in the air inlet and outlet, the defrost is extremely efficient and fast.

13 – 105 kW

Main features:

Fluid refrigerants all HFC's
 20 different models
 Fin spacing 4 – 6 – 7 – 8 mm
 Fan diameter 630 mm
 Number fans 1 - 5
 Defrost: electric, light electric, hot gas

Unit air coolers for agricultural applications, especially designed for fresh fruit and vegetable storage, working with small difference temperature between air temperature and fluid temperature, to prevent dehydration of the product.

11 – 64 kW

Main features:

Fluid refrigerants HFC's, Glycol and CO₂
 120 different models
 Fin spacing 4 – 6 – 7 – 8 mm
 Fan diameter 400 – 450 mm
 Number fans 2 - 6
 Air volume 6800 – 31000 m³/h
 Defrost: electric, light electric, hot glycol, combined defrosts

Fruit air cooler **REIB / RGIB / RBIB**Air cooler **REM / RGM / RAM**

Air coolers for floor mounting applications, especially designed for storage of agricultural products such as: potatoes, carrots, unions, etc. These air coolers offer convenient ventilation and cooling for storage of boxed and bagged products. This line of air coolers can be equipped with "air mix system" that mixes the air from the storage with outside air.

17 – 85 kW

Main features:

Fluid refrigerants HFC's, Glycol and NH₃.
 35 different models
 Fin spacing 4 – 5 – 6 – 7 – 8 mm
 Fan diameter 630 – 800 mm
 Air volume 31000 – 86000 m³/h
 Defrost: electric, light electric, hot glycol, water



Banana ripening cooler REDB / RGDB



Range of banana ripening air coolers designed for application in airbag and side curtain ripening rooms. Thanks the fan motors with high additional pressure and their complete reversibility they provide uniform banana ripening. These units have hinged fans panels for easier cleaning and maintenance operations.

8 – 46 kW

Main features:

Fluid refrigerants HFC's and glycol
Banana rooms with 1, 2 or 3 pallet levels
Banana rooms from 6 to 36 pallets
140 different models
Lighting integrated in the air cooler
Air heating with electric heaters

Air cooler REIR / RGIR



Air coolers especially designed for installation in cold room where the air is distributed by metal or textile ducts. These air coolers are equipped with radial fan motors that provide high available static pressure with low power consumption.

14 – 93 kW

Main features:

Fluid refrigerants HFC's and glycol
130 different models
Fin spacing 4 – 6 – 7 – 8 mm
Available static pressure 120 – 250 Pa
Defrost: electric, light electric, hot glycol, water

Shock freezer REBFT / RABFT / RBBFT



New line of blast freezers for fast freezing of meat, fish, ice cream and ready to serve meals in tunnels where it's required high cooling capacity in a limited space.

This range of shock freezers is designed especially when the food is deposited on trolleys and it grants perfect and fast food freezing thanks special fan motors that provide high additional air static pressure.

24 – 97 kW

Main features:

Fluid refrigerants HFC's, NH₃, Glycol and CO₂
122 different models
Fan diameter 630 – 710 mm
Fin spacing 6 – 7 – 8 – 10 – 12 mm
Available static pressure 80 – 150 Pa
Defrost: electric, hot gas, water, hot glycol, combined defrost

New line of blast freezers for fast freezing of meat, fish, ice cream and ready to serve meals in tunnels where it's required high cooling capacity in a limited space.

This blast freezer range is equipped with fan motors that provides additional air static pressure to grant a fast and uniform food cooling.

21 – 106 kW

Main features:

Fluid refrigerants HFC's, NH₃, Glycol and CO₂
136 different models
Fan diameter 500 – 630 – 710 mm
Fin spacing 6 – 7 – 8 – 10 – 12 mm
Available static pressure 80 – 150 Pa
Defrost: electric, hot gas, water, hot glycol, combined defrost

Blast freezer REBF / RABF / RBBF



Fast freezer REV / RGV / RBV



Innovative line of blast freezers designed for small and medium size freezing tunnels where the food is deposited on few trolleys. These fast freezers have hinged fans panels for easier cleaning and maintenance operations.

11 – 35 kW

Main features:

Fluid refrigerants HFC's, Glycol and CO2
85 different models
Fan diameter 450 – 500 mm
Fin spacing 6 – 8 – 10 – 12 mm
Available static pressure 50 – 100 Pa
Defrost: electric, hot gas, hot glycol, combined defrost

Shock cooler REX / RGX / RAX



New line of air coolers especially designed for shock cooling meat, fish and poultry. Thanks the special fans that provide high static pressure and high air flow, these units grant fast cooling of the products. These shock coolers can be equipped also with inlet hood for blast freezing in slaughter houses.

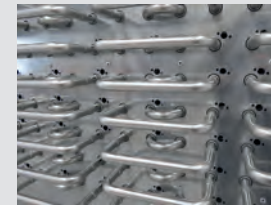
32 – 164 kW

Main features:

Fluid refrigerants HFC's, NH3 and glycol
190 different models
Fin spacing 6 – 7 – 8 – 10 – 12 mm
Available static pressure 50 – 100 Pa
Defrost: electric, hot gas, water, hot glycol, combined defrost

Air coolers accessories

Most of Refteco air coolers can be optimized with a wide range of accessories and construction variants, to grant long product life, better efficiency, fast installation and easy cleaning and maintenance.

**Stainless steel tubes**

This execution is required for aggressive environments or sanitary working conditions.

**Shut-up**

Polyester shut-up sock reduces defrost time and defrost power consumption, avoid to distribute frost on the ceiling and increases air throw.

**Coil coating (epoxy painted fins, cataphoresis treatment, Blygold treatment, Heresite treatment)**

This execution is required for aggressive environments.

**Mounting legs**

Mounting feet.

**Stainless steel casing**

This casing and frame execution is required for aggressive environments or sanitary working conditions.

**Fan ring heater**

The electric heater avoids ice buildup in the cowling and around fan, to prevent fan damage.

**Stainless steel fins**

This execution is required for aggressive environments or sanitary working conditions.

**Drip tray insulation**

Double drip tray with 10 mm elastomeric foam internal insulation.

**EC fans**

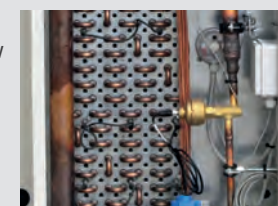
These electronic fans are equipped with electronic commutation speed control. This technology provides high efficiency and controllable air volume.

**Safety switch**

Fan motor ON/OFF switch for safety maintenance.

**Air cowl**

Air outlet diffuser increases air throw and keep air flow near the ceiling for maximum product storage in the cold room.

**Expansion valve and solenoid valve**

The DX evaporators can be equipped with mechanical or electronic valve and solenoid valve.

Condenser RCS / RCL / RCSD / RCLD



This new line of condensers with axial fans is suitable for refrigeration and air conditioning installations. Thanks wide range of models with different noise level and dimensions this range of condensers fulfill every customer needs. These condensers are available with one or two refrigerant circuits and they are available for horizontal or vertical installation.

9 – 1170 kW

Main features:

Fluid refrigerants HFC's and NH3 on request

920 different models

Fan diameter 350 – 500 – 630 – 800 – 910 mm

Fin spacing 2,1 – 2,3 – 2,5 – 3,0 – 4,0 mm

Noise level from 28 dB(A) at 10 m

Condenser RCVS / RCVD



Wide range of V type condensers very compact suitable for refrigeration and air conditioning installations. RCVS condensers thanks the reduced height of only 115 cm are suitable for installations in residential areas or historic sites where the external units should be easily hidden. RCVD condensers are especially designed for big capacity application.

80 – 2190 kW

Main features:

Fluid refrigerants HFC's and NH3 on request

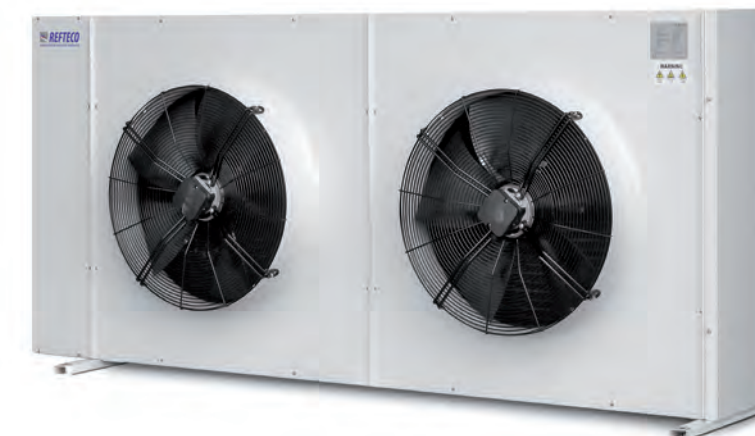
176 different models

Fan diameter 800 – 910 mm

Fin spacing 2,1 – 2,3 – 2,5 – 3,0 – 4,0 mm

Noise level from 30 dB(A) at 10 m

Condenser RCH



This innovative line of condensers with micro-channel provides many advantages if compared to traditional tubes and fins configuration. The main strengths of this product are: 25% lower power consumption, 30% smaller dimension, 70% lower refrigerant charge, more competitive and up to 3 dB(A) lower noise level.

22 – 118 kW

Main features:

Fluid refrigerants HFC's and NH3 on request

16 different models

Fan diameter 500 – 630 mm

Noise level from 28 dB(A) at 10 m

Refbox RCBS / RCBD



This combination of condenser and box is a smart solution for chillers and condensing units assembling. In the box can be easily installed: compressors, evaporator, main electrical panel, economizer, etc. while below the air cooled condenser can be installed the liquid receiver.

52 – 608 kW

Main features:

Fluid refrigerants HFC's and NH3 on request

64 different models

Fan diameter 500 – 630 – 800 – 910 mm

Fin spacing 2,1 – 2,3 – 2,5 – 3,0 – 4,0 mm

Noise level from 28 dB(A) at 10 m



Dry cooler RDS / RDL



New line of dry coolers suitable for refrigeration, air conditioning and process cooling installations. Thanks wide range of models with different noise level and dimensions this range of liquid coolers fulfill every customer needs. These dry coolers are available for horizontal or vertical installation. On request these units can be supplied with special fans for high temperature application.

9 – 640 kW

Main features:

16 different models
Fan diameter 500 – 630 – 800 – 910 mm
Fin spacing 2,1 – 2,3 – 2,5 – 3,0 – 4,0 mm
Design temperature -40 / +120°C
Noise level from 28 dB(A) at 10 m

Dry cooler RDVS



This new line of V type compact liquid coolers is suitable for refrigeration, air conditioning and process cooling installations. Thanks the reduced height of only 115 cm, this range of dry coolers is suitable for installations in residential areas or historic sites where the external units should be easily hidden. This range of liquid coolers is equipped with heat exchanger that provides very efficient heat transfer even for very low fan speed rotation.

56 – 760 kW

Main features:

70 different models
Fan diameter 800 – 910 mm
Number fans 1 - 8
Fin spacing 2,1 – 2,3 – 2,5 – 3,0 – 4,0 mm
Noise level from 28 dB(A) at 10 m

Dry cooler RDSD / RDL



The RDSD and RDL line of liquid coolers are especially suitable for big refrigeration, air conditioning, process cooling and cogeneration installations. Thanks wide range of models with different noise level and dimensions this range of dry coolers fulfill every customer needs. These dry coolers are available for horizontal or vertical installation and on customer request with special fan motors for high temperature applications.

62 – 1270 kW

Main features:

420 different models
Fan diameter 500 – 630 – 800 – 910 mm
Fin spacing 2,1 – 2,3 – 2,5 – 3,0 – 4,0 mm
Design temperature -40 / +120°C
Noise level from 30 dB(A) at 10 m

Dry cooler RDVD



The RDVD line is especially designed for huge installations in refrigeration, air conditioning and process cooling installations.

Thanks the V type configuration, the RDVD dry coolers can reach big capacities with reduced plan dimensions.

The combination of the V shape and high efficiency fan motors, the RDVD dry coolers perform the best energy class A++ with Standard capacity / Fans consumption bigger than 240. This line of dry coolers is very often combined with adiabatic cooling system accessory, reducing the energy consumption with limited water consumption.

290 – 2270 kW

Main features:

252 different models
Fan diameter 800 – 910 mm
Number fans 4 – 16
Fin spacing 2,1 – 2,3 – 2,5 – 3,0 – 4,0 mm
Noise level from 30 dB(A) at 10 m



Condensers and Dry coolers accessories

Almost Refteco condensers and dry coolers can be optimized with a wide range of accessories and construction variants, to provide better product efficiency, fast installation and easy cleaning and maintenance.



Fan speed controller for AC fans

The fan speed controller keeps the condensing pressure of the condensers and the fluid outlet temperature of the dry coolers lower than the setup values.



EC fans

These electronic fans are equipped with electronic commutation speed control. This technology provides high efficiency and controllable fan speed rotation.



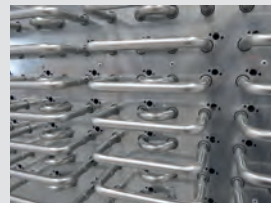
Electronic fan speed controller for EC fans

The fan speed controller for EC fans maintains the condensing pressure of the condensers and the fluid outlet temperature of the dry coolers lower than the setup values, reducing the fan power consumption and the noise levels.



Safety switch

Fan motor ON/OFF switch for safety maintenance.



Stainless steel tubes

This execution is required for aggressive environments.



Air outlet diffuser

This accessory reduces the noise level and the fan power consumption. It increases also the capacity of air cooled condenser and dry cooler at same noise level and same footprint.



Coil coating (epoxy painted fins, cataphoresis treatment, Blygold treatment, Heresite treatment)

This execution is required for aggressive environments.



Adiabatic cooling system

The dry and spraying system provides important energy savings compared to traditional evaporative condensers and cooling towers: lower water consumption, no risk of Legionella, lower energy consumption and no vapor plumes.

Stainless steel casing

This casing and frame execution is required for aggressive environments.

Vibration dampers supports

Bell-shaped anti-vibration absorbers provide product vibration isolation.

Special casing painting

Available on request special painting about RAL colour and corrosion protection according to every ISO 12944 classification.

ATEX fans

Special explosion proof fan motors designed to avoid the risk of explosion, according to ATEX 94/9/EC directive.

This microchannel condenser line thanks the V module configuration is a clever and fast solution for chillers, condensing units and big remote air cooled condensers production.

Thanks the microchannel heat exchanger this product reaches big condensing capacity, compact design, low power consumption and small refrigerant charge.

88 - 910 kW

Main features:

Fluid refrigerants HFC's, NH3 and Propane

24 different models

Fan diameter 800 mm

Number fans 2 - 16

Noise level from 30 dB(A) at 10 m

Fans AC or EC

V module microchannel



These tailor made heat exchangers are especially designed for fruit hydro cooling or installation inside ice banks. They are suitable for new installations and for revamping of existing systems.

45 - 290 kW

Main features:

Fluid refrigerants HFC's, NH3 and Glycol

Stainless steel or hot deep galvanized steel

Tubes diameter 1/2", 3/4", 1"

Length up to 6000 mm

Width up to 2400 mm

Height up to 2300 mm

Heat exchanger for hydro cooling and ice bank



Special air heat exchangers



Refteco can design and supply special tailor made finned heat exchangers for food industry, heavy industry, process cooling, oil & gas industry and power plants. For freezing tunnels Refteco can design the complete system cooling system equipped by finned heat exchangers, special fans for low temperature application that provide big air volume and high static pressure, frames and panels.

Main features:

Fluid refrigerants HFC's, NH₃, Glycol, CO₂, Propane
Tubes materials: Cooper, AISI 304, AISI 316L, Hot deep galvanized steel, Cu-Ni

Fins materials: Aluminum, Aluminum epoxy painted, Cooper, Al-Mg, AISI 304, AISI 316L, Carbon steel

Coil coating: Cataforesis, Blygold and Heresite
Cleanable heat exchangers with removable headers. On request.

Ice bank

The ice bank is especially designed for dairy industry, meat processing and fish industry. Thanks the latent heat of ice fusion, this system provides big cooling capacity available during the pick of cooling demand from the installation.

45 – 290 kW

Main features:

Stainless steel tank

Thermal insulation

Stainless steel heat exchangers

System can be supplied with or without water pumps

Electrical panel with controller

Water agitator system





DARMENT

www.darment.fi