



Compressor  
Voltage Code : FZ

AE4425Y-FZ1A

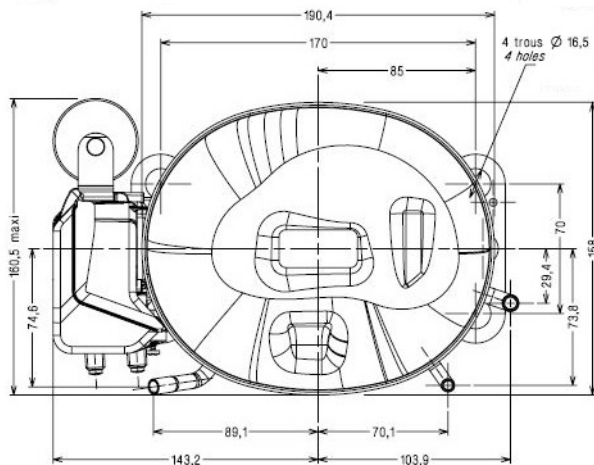
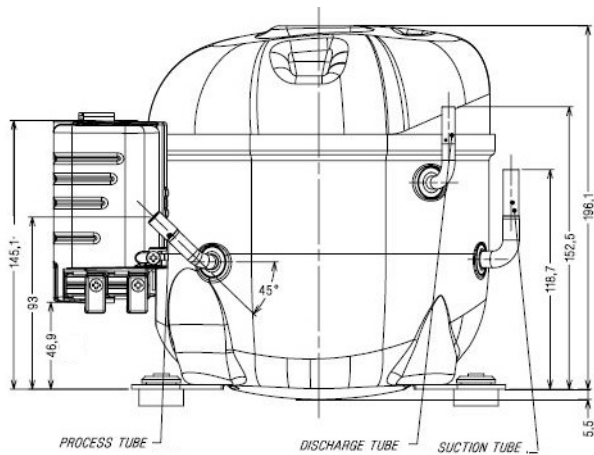
High Temp. Commercial (HP)

220 - 240V 1~ 50 Hz

R134a

AE4425Y-FZ1A\_BR

Conditions	Frequency	Nominal Cooling Capacity		Sound Power ISO3745 / ISO 3743-1
		Watts	BTU/h	
EN12900 / R134a	50 Hz	552	1882	50 dBA



\* EN12900 : T°Cond. 50.0°C / T°Evap. 5.0°C / T°Return gas temp.. 20.0°C  
T°Subcooling. 0.0K

Certificates :



<b>Displacement (cc)</b>	6.69
<b>Net Weight (Kg)</b>	9.1
<b>Oil Quantity (cc)</b>	280.0
<b>Oil Type</b>	Polyolester
<b>Expansion Device</b>	Capillary_Tube/Expansion_Valve
<b>Cooling</b>	Fan
<b>Main Winding (Ohm)</b>	12.85
<b>Start Winding (Ohm)</b>	27.56
<b>Current</b>	
RLA (A)	1.65
LRA (A)	10.5
<b>Electrical Equipment</b>	CSIR
<b>Overload</b>	T89009
Time Check	6.5s - 16s / 7.00 A
Open Temp	135° C
Close Temp	52° C
<b>Start Capacitor</b>	64 µF / 250 V
<b>Current Relay</b>	RP36**
Pick Up	4.35A
Drop Out	3.7A
<b>Refrigerating connection for OD</b>	
Suction Tube	6.35 (1/4")
Discharge Tube	4.76 (3/16")
Process Tube	6.35 (1/4")

Note : Tecumseh reserves the right to change information contained in this document without notification.



**Tecumseh**

<b>AE4425Y-FZ1A</b>	<b>Tension FZ : 220 - 240V 1~ 50 Hz</b>
---------------------	---

Les performances sont données dans les **conditions EN12900** :  
 Condition Dew  
 The performance data are in **EN12900 conditions** :  
 Dew Condition

Gaz aspirés : 20.0 °C  
 Sous refroidissement : 0.0 K  
 Return gas : 20.0 °C  
 Subcooling : 0.0 K

<b>50 Hz R134a</b>											
<b>N°3025</b>											
4   T condensation	5   T évaporation	(°C)	<b>-25</b>	<b>-20</b>	<b>-15</b>	<b>-10</b>	<b>-5</b>	<b>0</b>	<b>5</b>	<b>10</b>	<b>15</b>
<b>30</b>	1   P frigorifique	(Watt)	136	200	275	365	470	593	735	899	1087
	2   P absorbée	(W)	135	149	161	172	182	191	199	207	214
	3   I absorbée	(A)	1.21	1.24	1.27	1.29	1.32	1.34	1.36	1.38	1.40
<b>40</b>	1   P frigorifique	(Watt)	104	165	236	317	411	520	645	790	955
	2   P absorbée	(W)	135	153	171	186	201	214	227	238	250
	3   I absorbée	(A)	1.18	1.23	1.28	1.33	1.38	1.42	1.47	1.51	1.55
<b>50</b>	1   P frigorifique	(Watt)		128	193	265	348	443	552	676	819
	2   P absorbée	(W)		153	176	197	217	236	254	271	288
	3   I absorbée	(A)		1.22	1.29	1.36	1.43	1.50	1.57	1.63	1.70
<b>60</b>	1   P frigorifique	(Watt)			148	213	284	365	456	561	680
	2   P absorbée	(W)			179	207	233	258	283	306	329
	3   I absorbée	(A)			1.29	1.39	1.48	1.58	1.67	1.75	1.84



© 2019 Tecumseh Products Company  
All rights reserved

1 = cooling capacity 2 = power input 3 = current 4 = condensing temperature 5 = evaporating temperature

**Nota : Tecumseh se réserve le droit de modifier les informations contenues dans ce document sans préavis.**  
**Note : Tecumseh reserves the right to change information contained in this document without notification.**