



Compressor
Voltage Code : FZ

CAJ2464U-FZ

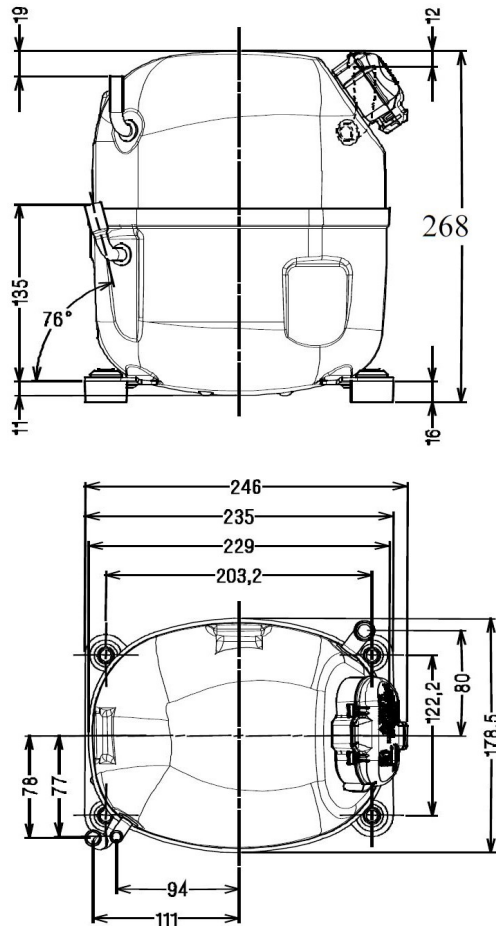
Low Temp. Commercial (BP)

220 - 240V 1~ 50 Hz

R290

AJ2444U-FZ3C

Conditions	Frequency	Nominal Cooling Capacity		Sound Power ISO3745 / ISO 3743-1
		Watts	BTU/h	
EN12900 / R290	50 Hz	827	2821	62 dBA



Displacement (cc)	34.5
Net Weight (Kg)	21.0
Oil Quantity (cc)	575.0
Oil Type	Polyolester
Expansion Device	Capillary_Tube/Expansion_Valve
Cooling	Fan
Main Winding (Ohm)	1.8
Start Winding (Ohm)	9.7
Current	
RLA (A)	5
MCC (A)	8.9
LRA (A)	35
Electrical Equipment	
	CSR
Overload	
	MST18AIW
Time Check	2.8s - 5.2s / 29 A
Open Temp	135° C
Close Temp	61° C
Optional	T0610
Start Capacitor	88 µF / 330 V
Run Capacitor	12 µF / 400 V
Potential Relay	
	RVA40**
Pick Up	280/310V
Drop Out	60/121V
Refrigerating connection for OD	
Suction Tube	12.7 (1/2")
Discharge Tube	9.5 (3/8")
Process Tube	6.35 (1/4")

* EN12900 : T°Cond. 40.0°C / T°Evap. -35.0°C / T°Return gas temp.. 20.0°C
T°Subcooling. 0.0K

Certificates :



Note : Tecumseh reserves the right to change information contained in this document without notification.



Tecumseh

CAJ2464U-FZ	Tension FZ : 220 - 240V 1~ 50 Hz
--------------------	---

Les performances sont données dans les conditions EN12900 :	Gaz aspirés :	20.0 °C
Condition Dew	Sous refroidissement :	0.0 K
The performance data are in EN12900 conditions :	Return gas :	20.0 °C
Dew Condition	Subcooling :	0.0 K

50 Hz R290



N°174ST-FZ

4 T condensation	5 T évaporation	(°C)	-40	-35	-30	-25	-20	-15	-10
30	1 P frigorifique	(Watt)	740	1023	1322	1649	2015	2433	2914
	2 P absorbée	(W)	611	701	791	879	960	1032	1091
	3 I absorbée	(A)	3.25	3.64	4.03	4.39	4.74	5.08	5.40
40	1 P frigorifique	(Watt)	543	827	1117	1424	1759	2135	2564
	2 P absorbée	(W)	614	716	823	933	1042	1147	1244
	3 I absorbée	(A)	3.14	3.67	4.18	4.67	5.15	5.61	6.05
50	1 P frigorifique	(Watt)		631	907	1189	1490	1821	2194
	2 P absorbée	(W)		729	850	979	1113	1247	1378
	3 I absorbée	(A)		3.65	4.29	4.91	5.51	6.10	6.67
60	1 P frigorifique	(Watt)				964	1227	1509	1822
	2 P absorbée	(W)				1029	1183	1343	1505
	3 I absorbée	(A)				5.11	5.84	6.55	7.25

© 2020 Tecumseh Products Company
All rights reserved

1 = cooling capacity 2 = power input 3 = current 4 = condensing temperature 5 = evaporating temperature

Nota : Tecumseh se réserve le droit de modifier les informations contenues dans ce document sans préavis.

Note : Tecumseh reserves the right to change information contained in this document without notification.