



Compressor
Voltage Code : FZ

CAJ4452Y-FZ

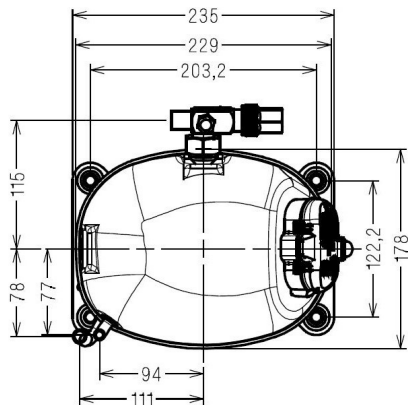
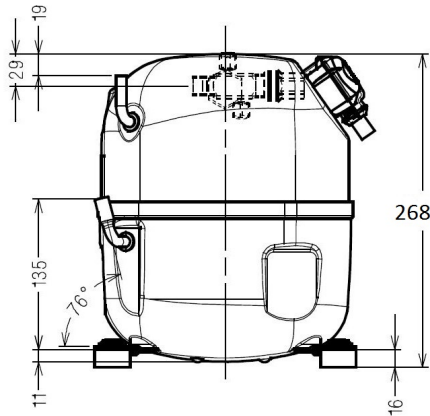
High Temp. Commercial (HP)

220 - 240V 1~ 50 Hz

R134a

AJ4452Y-FZ1C

Conditions	Frequency	Nominal Cooling Capacity		Sound Power ISO3745 / ISO 3743-1
		Watts	BTU/h	
EN12900 / R134a	50 Hz	1166	3975	55 dBA



Displacement (cc)	15.2
Net Weight (Kg)	18.7
Oil Quantity (cc)	475.0
Oil Type	Polyolester
Expansion Device	Capillary_Tube/Expansion_Valve
Cooling	Fan
Main Winding (Ohm)	3.9
Start Winding (Ohm)	20.6
Current	
RLA (A)	3.5
MCC (A)	5.2
LRA (A)	19.4
Electrical Equipment	CSIR
Overload	MRA38114
Time Check	2.8s - 5.2s / 20 A
Open Temp	105° C
Close Temp	52° C
Optional	T0792
Start Capacitor	64 µF / 330 V
Potential Relay	RVA40**
Pick Up	280/310V
Drop Out	60/121V
Optional	/
Refrigerating connection for OD	
Suction Tube	12.7 (1/2")
Discharge Tube	6.35 (1/4")
Process Tube	6.35 (1/4")

* EN12900 : T°Cond. 50.0°C / T°Evap. 5.0°C / T°Return gas temp.. 20.0°C
T°Subcooling. 0.0K

Certificates :



Note : Tecumseh reserves the right to change information contained in this document without notification.



Tecumseh

CAJ4452Y-FZ	Tension FZ : 220 - 240V 1~ 50 Hz
--------------------	---

Les performances sont données dans les conditions EN12900 :	Gaz aspirés :	20.0 °C
Condition Dew	Sous refroidissement :	0.0 K
The performance data are in EN12900 conditions :	Return gas :	20.0 °C
Dew Condition	Subcooling :	0.0 K

50 Hz R134a

N°214CS-FZ

4 T condensation	5 T évaporation	(°C)	-25	-20	-15	-10	-5	0	5	10	15
30	1 P frigorifique	(Watt)	320	454	616	812	1049	1332	1668	2060	2517
	2 P absorbée	(W)	269	306	338	367	392	414	432	447	460
	3 I absorbée	(A)	2.71	2.77	2.83	2.90	2.96	3.02	3.08	3.15	3.21
40	1 P frigorifique	(Watt)	230	357	504	678	885	1130	1419	1759	2154
	2 P absorbée	(W)	259	308	352	393	429	461	490	515	537
	3 I absorbée	(A)	2.65	2.76	2.86	2.97	3.08	3.19	3.30	3.41	3.53
50	1 P frigorifique	(Watt)		244	379	533	711	920	1166	1453	1789
	2 P absorbée	(W)		288	347	401	450	496	536	573	606
	3 I absorbée	(A)		2.66	2.82	2.98	3.13	3.29	3.45	3.61	3.77
60	1 P frigorifique	(Watt)			241	377	529	704	908	1146	1425
	2 P absorbée	(W)			316	386	451	511	566	617	663
	3 I absorbée	(A)			2.70	2.90	3.11	3.31	3.52	3.73	3.93

© 2019 Tecumseh Products Company
All rights reserved

1 = cooling capacity 2 = power input 3 = current 4 = condensing temperature 5 = evaporating temperature

Nota : Tecumseh se réserve le droit de modifier les informations contenues dans ce document sans préavis.
Note : Tecumseh reserves the right to change information contained in this document without notification.