

Condensing unit
Voltage Code : FZ

CAJN9513ZMHR-FZ

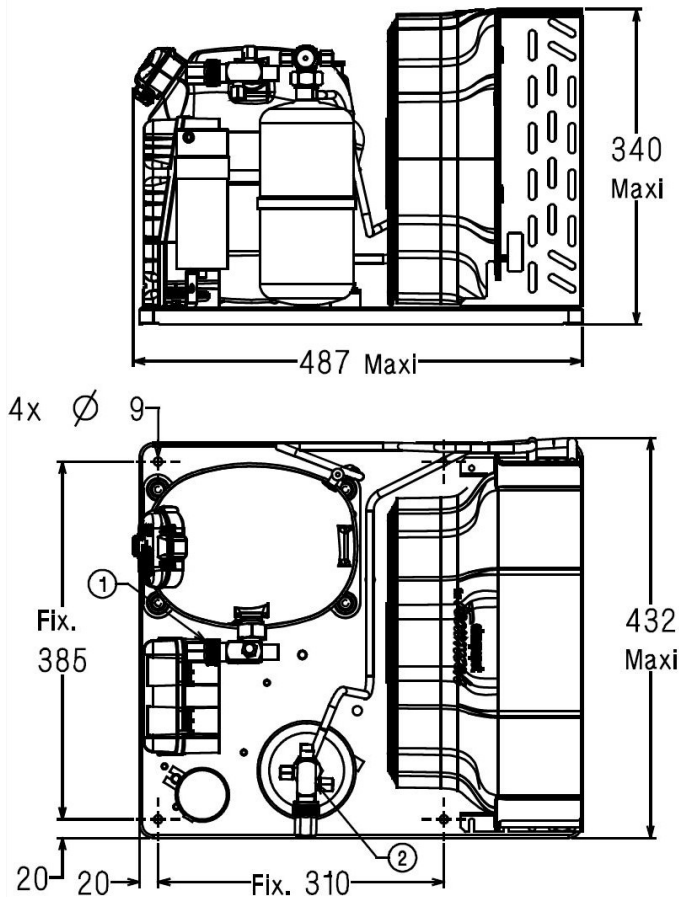
High Temp. Commercial (MHP)

220 - 240V 1~ 50 Hz

R452A / R404A / R448A / R449A

CAJN9513ZMHR-FZ

Conditions	Frequency	Nominal Cooling Capacity		Sound Power ISO3745 / ISO 3743-1
		Watts	BTU/h	
EN13215 / R452A	50 Hz	1685	5745	65 dBA
EN13215 / R404A	50 Hz	1768	6029	65 dBA
EN13215 / R448A	50 Hz	1560	5320	65 dBA
EN13215 / R449A	50 Hz	1561	5323	65 dBA



Net Weight (Kg)	34.0
Expansion device	Expansion_Valve
Air Flow (m³/h)	900
Compo Data Sheet	224JT-FZ
Elec Comp Type	CSR
Current (Amp)	
Load Rated Amp	6.9
Max Cont Current	11.5
Lock Rotor Amp	33
Fan	
Speed (rpm)	1200
Power (W)	30.0
Diameter (mm)	300
Protection	Overload
IP Level	IP54
Condenser	300/3900
Liquid Receiver	
Capacity (L)	1.5
Maximum Pressure (Bars)	32.0
Suction Line	
Suction Type	Vanne Orientable
For Tubing Out Diam	15.9 (5/8")
Suction Connection Type	Brased
Liquid Line	
Liquid Line Type	Vanne Orientable
For Tubing Out Diam	9.5 (3/8")
Liquid Connecton Type	Brased
Connection Type	VR
Fan Guard	maille < à 8mm

* EN13215 : T°Ambient 32.0°C / T°Evap. -10.0°C / T°Return gas temp.. 20.0°C
T°Subcooling. 3.0K

Note : Tecumseh reserves the right to change information contained in this document without notification.



Tecumseh

CAJN9513ZMHR-FZ	Tension FZ : 220 - 240V 1~ 50 Hz
------------------------	---

Les performances sont données dans les **conditions EN13215** :
 Condition Dew

The performance data are in **EN13215 conditions** :
 Dew Condition

Gaz aspirés : 20.0 °C
 Sous refroidissement : 3.0 K

Return gas : 20.0 °C
 Subcooling : 3.0 K

© 2019 Tecumseh Products Company
All rights reserved

50 Hz R452A

N°6291

5 T ambience	6 T évaporation	(°C)	-25	-20	-15	-10	-5	0	5	10	15
25	1 P frigorifique	(Watt)	991	1263	1568	1897	2243	2597	2950	3295	3626
	2 P absorbée	(W)	652	751	855	966	1084	1213	1352	1505	1672
	3 I absorbée	(A)	3.66	4.03	4.44	4.90	5.43	6.01	6.66	7.38	8.17
	4 Tc	(°C)	31.4	34.2	37.0	40.0	43.1	46.3	49.6	53.0	56.5
32	1 P frigorifique	(Watt)	846	1102	1384	1685	1997	2315	2630	2938	
	2 P absorbée	(W)	649	758	872	992	1120	1257	1405	1565	
	3 I absorbée	(A)	3.61	4.03	4.50	5.01	5.58	6.20	6.89	7.64	
	4 Tc	(°C)	37.1	39.7	42.4	45.2	48.0	51.0	54.2	57.4	
43	1 P frigorifique	(Watt)		842	1089	1346	1609	1872			
	2 P absorbée	(W)		747	879	1017	1161	1314			
	3 I absorbée	(A)		3.98	4.54	5.13	5.78	6.47			
	4 Tc	(°C)		48.4	50.8	53.3	55.9	58.7			

50 Hz R404A

N°5051

5 T ambience	6 T évaporation	(°C)	-25	-20	-15	-10	-5	0	5	10	15
25	1 P frigorifique	(Watt)	1079	1356	1663	1990	2330	2671	3003	3318	3608
	2 P absorbée	(W)	691	792	897	1008	1127	1253	1390	1538	1699
	3 I absorbée	(A)	3.88	4.24	4.66	5.12	5.64	6.22	6.85	7.55	8.31
	4 Tc	(°C)	34.2	36.9	39.8	42.6	45.6	48.7	51.8	55.0	58.3
32	1 P frigorifique	(Watt)	927	1187	1470	1768	2073	2376	2669	2945	3199
	2 P absorbée	(W)	691	803	918	1039	1166	1301	1446	1601	1768
	3 I absorbée	(A)	3.84	4.27	4.73	5.24	5.81	6.42	7.09	7.82	8.60
	4 Tc	(°C)	39.8	42.3	44.9	47.6	50.4	53.2	56.2	59.2	62.3
43	1 P frigorifique	(Watt)	679	915	1163	1416	1669	1915			
	2 P absorbée	(W)	669	799	933	1071	1214	1364			
	3 I absorbée	(A)	3.73	4.25	4.80	5.40	6.03	6.71			
	4 Tc	(°C)	48.5	50.7	53.0	55.4	57.8	60.4			

1 = cooling capacity 2 = power input 3 = current 4 = condensing temperature 5 = ambient temperature 6 = evaporating temperature

Nota : Tecumseh se réserve le droit de modifier les informations contenues dans ce document sans préavis.
Note : Tecumseh reserves the right to change information contained in this document without notification.



Tecumseh

CAJN9513ZMHR-FZ	Tension FZ : 220 - 240V 1~ 50 Hz
------------------------	---

Les performances sont données dans les conditions EN13215 :	Gaz aspirés :	20.0 °C
Condition Dew	Sous refroidissement :	3.0 K
The performance data are in EN13215 conditions :	Return gas :	20.0 °C
Dew Condition	Subcooling :	3.0 K

© 2019 Tecumseh Products Company
All rights reserved

50 Hz R448A (*)

N°6981

5 T ambience	6 T évaporation	(°C)	-25	-20	-15	-10	-5	0	5	10	15
25	1 P frigorifique	(Watt)		1120	1416	1743	2095	2469	2862	3268	3684
	2 P absorbée	(W)		728	829	938	1057	1187	1329	1487	1661
	3 I absorbée	(A)		4.07	4.51	5.00	5.54	6.14	6.80	7.52	8.32
	4 Tc	(°C)		34.5	37.5	40.5	43.6	46.8	50.1	53.5	56.9
32	1 P frigorifique	(Watt)			1257	1560	1885	2229	2589		
	2 P absorbée	(W)			848	967	1096	1236	1389		
	3 I absorbée	(A)			4.59	5.13	5.72	6.36	7.06		
	4 Tc	(°C)			42.8	45.6	48.5	51.5	54.6		
43	1 P frigorifique	(Watt)				1272	1557				
	2 P absorbée	(W)				998	1146				
	3 I absorbée	(A)				5.28	5.95				
	4 Tc	(°C)				53.8	56.4				

50 Hz R449A (*)

N°6223

5 T ambience	6 T évaporation	(°C)	-25	-20	-15	-10	-5	0	5	10	15
25	1 P frigorifique	(Watt)		1120	1417	1744	2096	2471	2863	3270	3686
	2 P absorbée	(W)		728	829	938	1057	1187	1329	1487	1661
	3 I absorbée	(A)		4.07	4.51	5.00	5.54	6.14	6.80	7.52	8.32
	4 Tc	(°C)		34.6	37.5	40.5	43.5	46.7	50.0	53.4	56.9
32	1 P frigorifique	(Watt)			1258	1561	1886	2230	2590		
	2 P absorbée	(W)			848	967	1096	1236	1389		
	3 I absorbée	(A)			4.59	5.13	5.72	6.36	7.06		
	4 Tc	(°C)			42.8	45.6	48.5	51.5	54.6		
43	1 P frigorifique	(Watt)				1273	1558				
	2 P absorbée	(W)				998	1146				
	3 I absorbée	(A)				5.28	5.95				
	4 Tc	(°C)				53.8	56.3				

1 = cooling capacity 2 = power input 3 = current 4 = condensing temperature 5 = ambient temperature 6 = evaporating temperature

(*) Veuillez vous référer strictement aux Recommandations d'Utilisation et Bulletins Marketing Tecumseh du fait de la température de reflux élevée pour les applications LBP.

(*) Due to very high discharge temperature especially on LBP conditions, please strictly refer to Tecumseh Guidelines & Marketing Bulletin when using this refrigerant.

Nota : Tecumseh se réserve le droit de modifier les informations contenues dans ce document sans préavis.

Note : Tecumseh reserves the right to change information contained in this document without notification.