

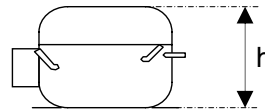
OPERATION:

Application:	L.B.P.	Max. Ambient Temp:	43°C
Refrigerant:	R134a	(1) Max. Steady Discharge Temp:	120°C
Operation:	Capillary	(1,2) Max. Peak Discharge Temp:	135°C
Cooling:	Static	Max. Steady Condensing Temp:	60°C
		(2) Max. Peak Condensing Temp:	70°C
		Max. Winding Temp:	130°C
		Max. Impurities:	30 mg
		Max.Total Compressor Water Content:	100 mg

COMPRESSOR:

Displacement:	5.73 cc	Oil Type:	Ester
		(4) Viscosity:	15 cSt
		Suction Muffler:	Semi-direct

(3) Net Wt:	7.3 kg
Case Size:	2 (h = 169.5 mm)
Oil Charge:	160 cc



ELECTRICAL:

Power Supply:	220 - 240V	Motor Type:	RSIR
Voltage Limits:	187 - 264V	Locked Rotor Current:	15.2 / 5.5 A**
Frequency:	50 Hz		
Phase:	1 ph		

Main Winding Resistance at 25°C:	16.8 Ω
Start Winding Resistance at 25°C:	9.7 Ω

** Maximum current / Measured after 4 seconds

- (1) Measured 5cm. from the shell with insulated thermocouples
- (2) For transient conditions during 'Pull Down'
- (3) Net weight is with oil but without electrics
- (4) Measured at 40°C

*For rated performance,
the suction line must be connected to the stub
marked 'AS' on the attached drawing.*

ELECTRICAL COMPONENTS:

ECC Starting Device: K 100-xx
Starting Device: PTC- 8100
(1) Starting Device: PTC - 7100DT
PTC Resistance: 14 Ω

-xx Protector short code

PROTECTORS: **BDG ¾**

Type	AE 72 FU x
Open °C	115 - 125 °C
Close °C	71 - 53 °C
U.T.C	2.10 A 70 °C
Time Check Current	8.60 A
Max. Current	17.0 A
Code (if any)	FP

Type	WANBAO
Open °C	105 - 115 °C
Close °C	70 - 52 °C
U.T.C	2,22 A 70 °C
Time Check Current	8,8 A
Max. Current	18,0 A
Code (if any)	M9

Alt. protectors: AF 72 FU x
Code (if any) DT

*BDG 'x' Codes: 6 for terminal boards Mod.89,90
8 for terminal board Mod.91
4 for UH protector with 6.3mm fast-on
5 for UH protector with M3.5 screw*



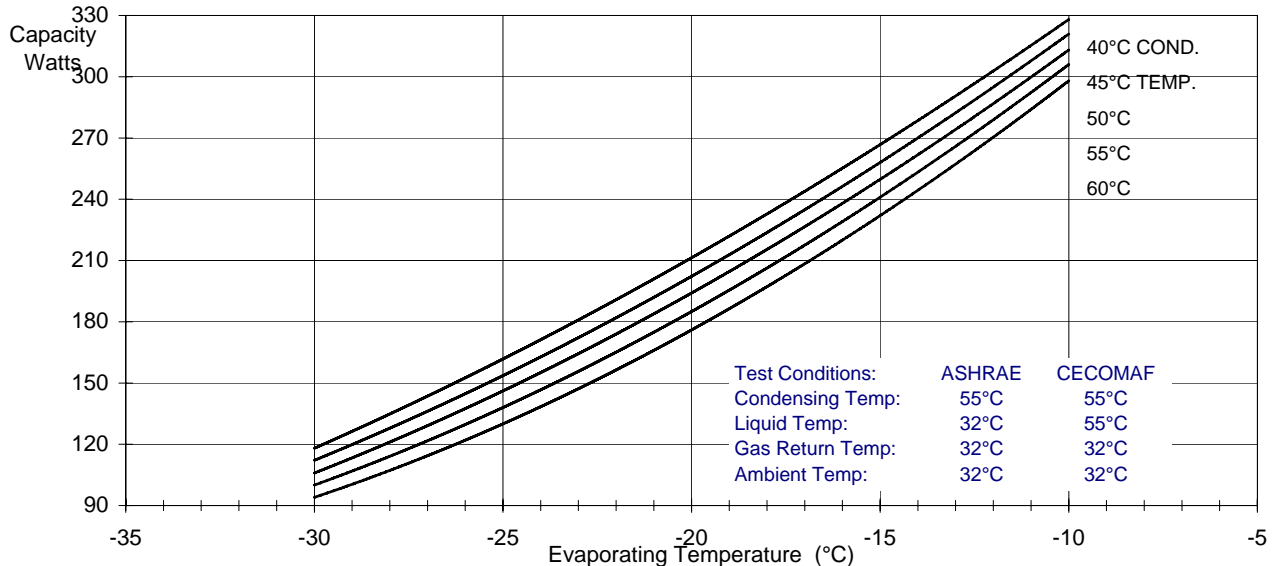
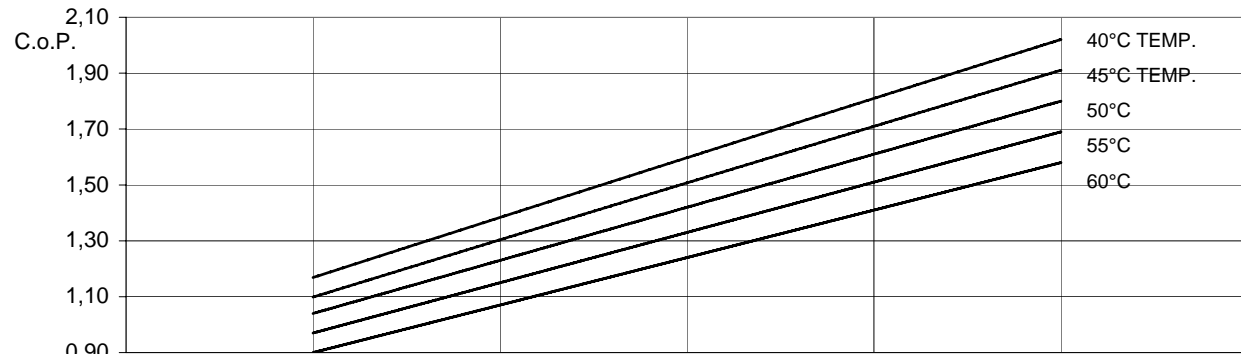
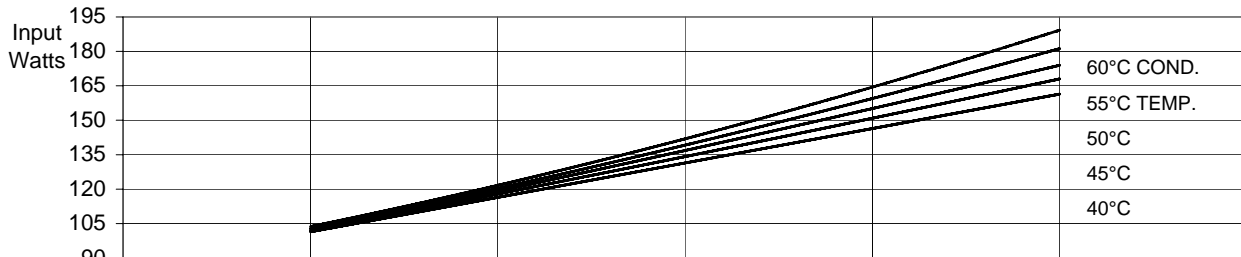
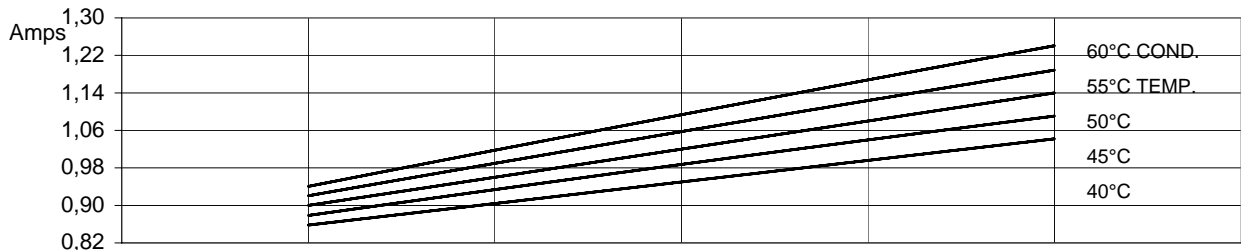
GVM57AA

PRODUCT SPECIFICATION

PERFORMANCE:

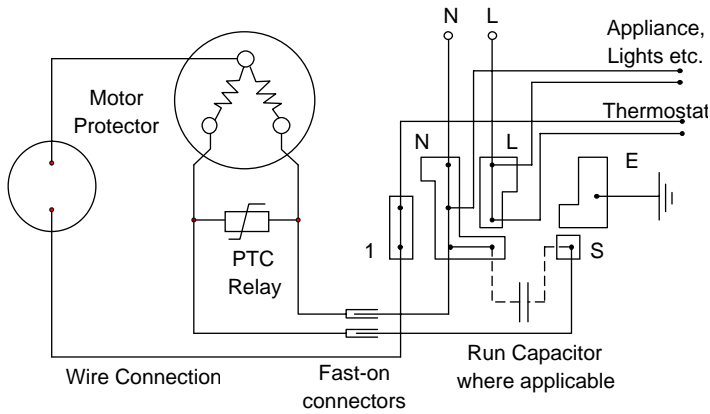
(Graphs are at ASHRAE conditions)

220V 50Hz

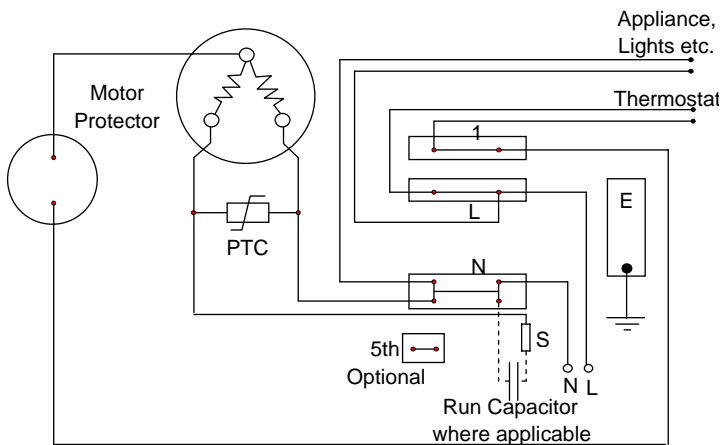


	Evaporating Temperature °C	-30	-25	-23,3	-20	-15	-10
ASHRAE:	Capacity W	100	138	153	185	241	306
	C.o.P. W / W	0,97	1,15	1,20	1,33	1,51	1,69
CECOMAF:	Capacity W	82	113		151	196	249
	C.o.P. W / W	0,80	0,94		1,08	1,23	1,37
	Input Power W	103	120	127	139	160	181
	Current A	0,92	0,99	1,01	1,06	1,12	1,19

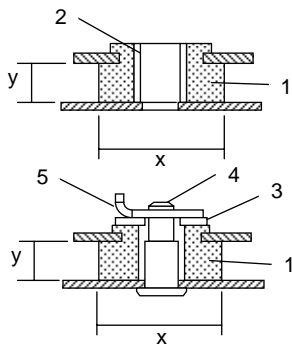
Circuit Diagram for Mod.90 Terminal Board



Circuit Diagram for ECC Terminal Board Frontal Version



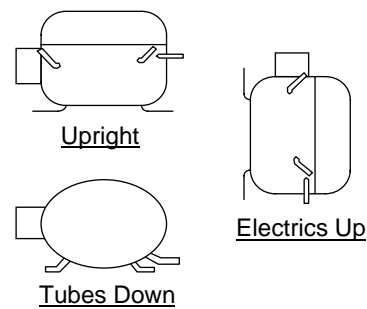
Mounting Accessories



x = 24 or 26 or 28.5mm
y = 9mm or 10.3mm
Other sizes available

1. Rubber grommet
2. Sleeve
3. Washer
4. Steel pin
5. Clip

Recommended Transport Positions when fitted into appliances



Compressor Label

