

Vertical Liquid Receivers



Horizontal & Vertical Liquid Receivers



Deep Drawn Vertical Liquid Receivers



LIQUID RECEIVERS



Horizontal Liquid Receivers



Horizontal Liquid Receivers With BasePlate For Compressor



Product introduction ;

Liquid receivers are used to compensate the fluctuations in the system, generally at the high-pressure side of the system.

They function as a buffer/cushion between the liquid and the heated gas.

They are also used to prevent the heated gas from going to the evaporator; besides, they let the liquid in the system refresh.

They are placed between the condenser and the compressor in the refrigeration units.

Liquid receivers should be sized in accordance with the amount of the refrigerant fluid in the facility.

They can be used with every kind of refrigerant in every kind of refrigeration system where refrigerant storage is necessary.

It is momentarily advisable to use safety relief valves in liquid receivers and rotolock valves in inlet and outlet connections.

Liquid receivers are produced in accordance with the CE 97/23/EC directive.

Note;

Consulting our catalogue, it's advisable considering that the storage maximum volume shall be the 80% of the volume.

All products are manufactured with materials, procedures and test in according to PED 97/23/EC Directive and to EN 14276-1

Technical Data



Code Numbers; HLR-9A-F/F-90x3

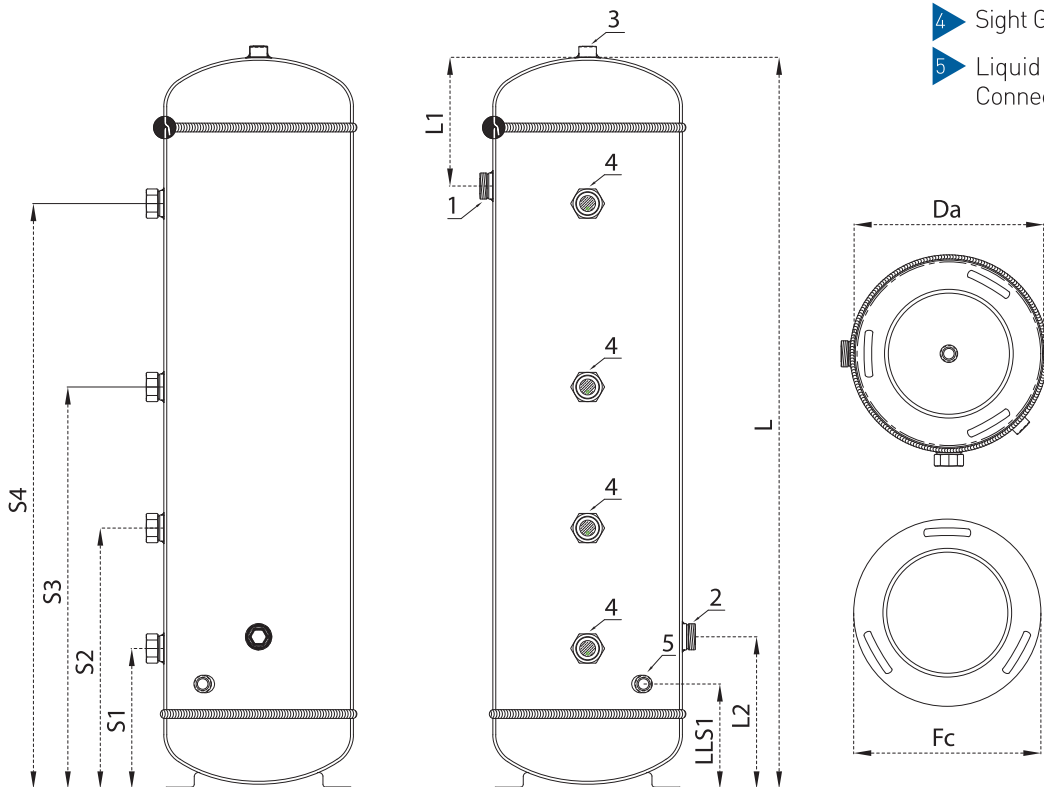
- **HLR-9A-F/F-90x3** - Horizontal Liquid Receivers.
- **HLR-9A-F/F-90x3** - Diameter of products
- **HLR-9A-F/F-90x3** - Design of products
- **HLR-9A-F/F-90x3** - Inlet and outlet Flare connection (if you need solder connections you should change the F/F to S/S)

Forexample if need inlet solder and outlet flare connection the code number must be VLR-9A-S/F-90x3

- **HLR-9A-F/F-90x3** - Volume of products
- **HLR-9A-F/F-90x3** - Quantity of Sight glasses

P.S: Please contact us for further information.

- 1 Outlet Connection
- 2 Inlet Connection
- 3 Safety Valve Connection
- 4 Sight Glass (optional)
- 5 Liquid Level Sensor Connection (optional)



VERTICAL LIQUID RECEIVERS



The following list includes standard products only.

Upon special request, these standard products can be modified according to the Directive 97/23/EC.

- Sight glass may be reduced or increased according to the requirement.
- Sight glasses may be produced in various dimensions according to the requirement.
- Inlet & Outlet connections can be used in various dimensions and features according to the requirement.
- Liquid level sensor connections can be used according to the requirement. 1/2" NPT connection is used as standard.

However, LLS-01 model that is supplied by us uses M20x1.5 coupling sleeves.

Please see the page 45 for further information about the product.

- Different coupling sleeves may be used according to the safety valve that you will use and its connection.

- Products in different volume and design may be produced upon request.

Please contact us for further detail.

Model	Volume (Lt)	Diameter	Dimensions				Connections			Type	Sight Glasses				CE			
			L (mm)	L1 (mm)	L2 (mm)	Fc (mm)	Sv (Inch)	Inlet (Inch)	Outlet (Inch)		S1 (mm)	S2 (mm)	S3 (mm)	S4 (mm)	PED 32 Bar	97/23/EC 45 Bar		
VLR-5A-F/F-04x1	4	ø140	310	85	140	ø 135 (VFC-135)	-	1"-14 UNS	1"-14 UNS	SW36 Screw Sight Glass	120	-	-	-	CAT I A1	CAT I/A1		
VLR-5A-F/F-05x1	5		380								120	-	-	-				
VLR-6A-F/F-06x1	6	340	130	150	ø 161 (VFC-161)	1/2" NPTF	1"-14 UNS	1"-14 UNS	130		-	-	-	CAT I A1	CAT II A1			
VLR-6A-F/F-07x1	7	380							130		-	-	-					
VLR-6A-F/F-08x1	8	450	130	150	ø 161 (VFC-161)	1/2" NPTF	1"-14 UNS	1"-14 UNS	130		-	-	-			130	-	-
VLR-6A-F/F-09x1	9	500							130		-	-	-					
VLR-6A-F/F-10x1	10	540	130	150	ø 161 (VFC-161)	1/2" NPTF	1"-14 UNS	1"-14 UNS	130		-	-	-			130	-	-
VLR-6A-F/F-12x2	12	650							130		-	-	-					
VLR-7A-F/F-14x1	14	430	130	200	ø 182 (VFC-182)	1/2" NPTF	1"-14 UNS	1"-14 UNS	210		-	-	-			210	-	-
VLR-7A-F/F-16x1	16	490							210		-	-	-					
VLR-7A-F/F-18x1	18	550	150	200	ø 182 (VFC-182)	1/2" NPTF	1 1/4"-12 UNF	1 1/4"-12 UNF	210		-	-	-			210	-	-
VLR-7A-F/F-20x2	20	620							210		450	-	-					
VLR-7A-F/F-25x2	25	760	150	200	ø 182 (VFC-182)	1/2" NPTF	1 1/4"-12 UNF	1 1/4"-12 UNF	210	590	-	-	210			590	-	
VLR-7A-F/F-30x2	30	900							230	780	-	-						
VLR-7A-F/F-35x3	35	1050	150	200	ø 182 (VFC-182)	1/2" NPTF	1 1/4"-12 UNF	1 1/4"-12 UNF	230	780	-	-	230	530	880			
VLR-8A-F/F-30x1	30	580							230	530	880	-	B + C1					
VLR-8A-F/F-35x2	35	680	180	250	ø 249 (VFC-249)	1/2" NPTF	1"-14 12 UNF	1 1/4"-12 UNF	230	-	-	-	230	480	-			
VLR-8A-F/F-40x2	40	780							230	580	-	-						
VLR-8A-F/F-45x2	45	870	180	250	ø 249 (VFC-249)	1/2" NPTF	1 3/4"-12 UNS	1 3/4"-12 UNS	260	670	-	-	260	670	-			
VLR-8A-F/F-50x2	50	970							260	770	-	-						
VLR-8A-F/F-60x3	60	1160	220	260	ø 320 (VFC-320)	1/2" NPTF	1 3/4"-12 UNS	1 3/4"-12 UNS	260	560	960	-	260	560	960			
VLR-8A-F/F-70x3	70	1350							260	660	1150	-						
VLR-8A-F/F-80x3	80	1540	220	260	ø 320 (VFC-320)	1/2" NPTF	1 3/4"-12 UNS	1 3/4"-12 UNS	260	660	1150	-	260	760	1340			
VLR-9A-F/F-45x1	45	630							220	-	-	-						
VLR-9A-F/F-50x2	50	700	220	260	ø 320 (VFC-320)	1/2" NPTF	1 3/4"-12 UNS	1 3/4"-12 UNS	220	-	-	-	220	-	-			
VLR-9A-F/F-60x2	60	840							220	470	-	-						
VLR-9A-F/F-70x2	70	960	220	260	ø 320 (VFC-320)	1/2" NPTF	1 3/4"-12 UNS	1 3/4"-12 UNS	240	660	-	-	240	660	-			
VLR-9A-F/F-80x3	80	1110							240	710	-	-						
VLR-9A-F/F-90x3	90	1250	220	260	ø 320 (VFC-320)	1/2" NPTF	1 3/4"-12 UNS	1 3/4"-12 UNS	240	540	860	-	240	540	860			
VLR-9A-F/F-100x3	100	1400							240	640	1150	-						
VLR-10A-F/F-100x3	100	900	250	330	ø 430 (VFC-430)	1/2" NPTF	2 1/4"-12 UN	2 1/4"-12 UN	280	640	-	-	280	640	-			
VLR-10A-F/F-125x3	125	1110							280	530	850	-						
VLR-10A-F/F-150x3	150	1330	280	330	ø 480 (VFC-480)	1/2" NPTF	2 1/4"-12 UN	2 1/4"-12 UN	280	630	1070	-	280	630	1070			
VLR-11A-F/F-175x3	175	1270							300	600	950	-						
VLR-11A-F/F-200x3	200	1450	280	330	ø 480 (VFC-480)	1/2" NPTF	2 1/4"-12 UN	2 1/4"-12 UN	300	650	1130	-	300	650	1130			
VLR-11A-F/F-225x3	225	1620							300	750	1300	-						
VLR-12A-F/F-250x3	250	1450	300	380	ø 550 (VFC-550)	1/2" NPTF	2 1/4"-12 UN	2 1/4"-12 UN	350	650	1150	-	350	650	1150			
VLR-12A-F/F-300x3	300	1750							350	750	1450	-						
VLR-12A-F/F-350x3	350	2000	300	380	ø 550 (VFC-550)	1/2" NPTF	2 1/4"-12 UN	2 1/4"-12 UN	350	650	1150	1700	350	650	1150			
VLR-12A-F/F-400x3	400	2300							350	750	1350	2000						
VLR-13A-F/F-450x4	450	1800	350	450	ø 650 (VFC-650)	1/2" NPTF	ODS 76	ODS 76	400	700	1000	1400	400	700	1000			
VLR-13A-F/F-500x4	500	2000							400	700	1100	1600						
VLR-13A-F/F-550x4	550	2200	350	450	ø 650 (VFC-650)	1/2" NPTF	ODS 76	ODS 76	400	750	1200	1800	400	750	1200			

Technical Data



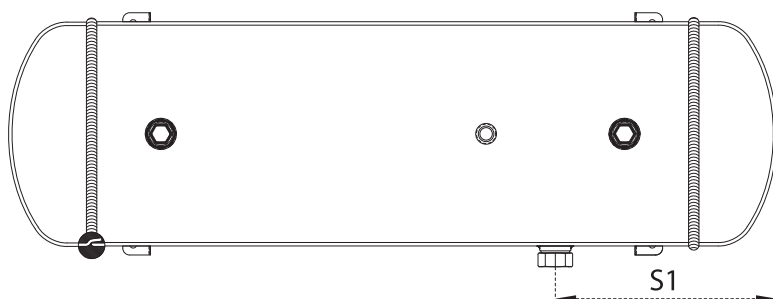
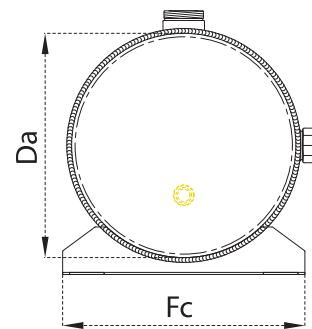
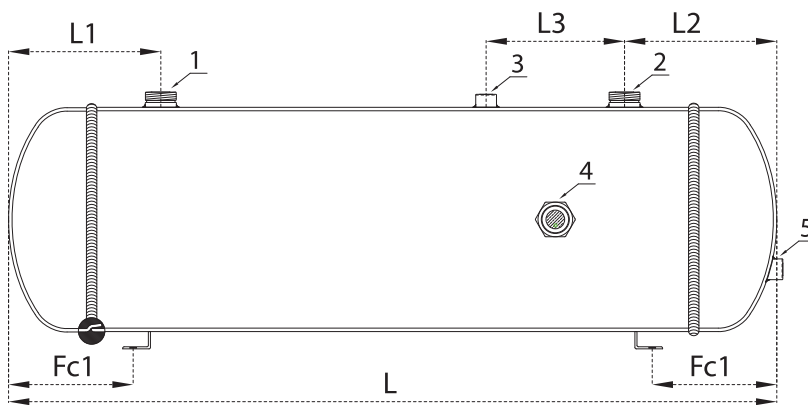
Code Numbers; HLR-9A-F/F-90x3

- **HLR-9A-F/F-90x3** - Horizontal Liquid Receivers.
- **HLR-9A-F/F-90x3** - Diameter of products
- **HLR-9A-F/F-90x3** - Design of products
- **HLR-9A-F/F-90x3** - Inlet and outlet Flare connection (if you need solder connections you should change the F/F to S/S)

Forexample if need inlet solder and outlet flare connection the code number must be VLR-9A-S/F-90x3

- **HLR-9A-F/F-90x3** - Volume of products
- **HLR-9A-F/F-90x3** - Quantity of Sight glasses

P.S: Please contact us for further information.



- 1 Outlet Connection
- 2 Inlet Connection
- 3 Safety Valve Connection
- 4 Sight Glass (optional)
- 5 Liquid Level Sensor Connection (optional)

HORIZONTAL LIQUID RECEIVERS



The following list includes standard products only.

Upon special request, these standard products can be modified according to the Directive 97/23/EC.

- Sight glass may be reduced or increased according to the requirement.
- Sight glasses may be produced in various dimensions according to the requirement.
- Inlet & Outlet connections can be used in various dimensions and features according to the requirement.
- Liquid level sensor connections can be used according to the requirement. 1/2" NPT connection is used as standard. However, LLS-01 model that is supplied by us uses M20x1.5 coupling sleeves.

Please see the page 45 for further information about the product.

- Different coupling sleeves may be used according to the safety valve that you will use and its connection.

- Products in different volume and design may be produced upon request.

Please contact us for further detail.

Model	Volume (Lt)	Diameter	Dimensions					Connections				Type	Sight Glass	CE									
			L (mm)	L1 (mm)	L2 (mm)	L3 (mm)	Fc1 (mm)	Fc (mm)	Sv (Inch)	Inlet (Inch)	Outlet (Inch)			S1 (mm)	PED 32 Bar	97/23/EC 45 Bar							
HLR-5A-F/F-04x1	4	140	310	85	85	-	70	155 (HFC-155)	-	1"-14 UNS	1"-14 UNS	SW36 Screw Sight Glass	145	CAT I A1	CAT I A1								
HLR-5A-F/F-05x1	5		380										180			145							
HLR-6A-F/F-06x1	6		340										80	80		150							
HLR-6A-F/F-07x1	7	380	A_80	70	175 (HFC-175)	1/2" NPTF	1"-14 UNS	1"-14 UNS	180														
HLR-6A-F/F-08x1	8	450								100	100		100										
HLR-6A-F/F-09x1	9	500								100	100		100										
HLR-6A-F/F-10x1	10	540	A_120	120	240 (HFC-240)	1/2" NPTF	1"-14 UNS	1"-14 UNS	200														
HLR-6A-F/F-12x1	12	650								120	120		150										
HLR-7A-F/F-14x1	14	430								120	120		150										
HLR-7A-F/F-16x1	16	490	140	140	200	120	1 1/4"-12 UNF	1 1/4"-12 UNF	240														
HLR-7A-F/F-18x1	18	550								140	140	200											
HLR-7A-F/F-20x1	20	620								140	140	200											
HLR-7A-F/F-25x1	25	760	150	150	140	150	300 (HFC-300)	1/2" NPTF	1 1/4"-12 UNF	1 1/4"-12 UNF	1 3/4" Rotolock Sight Glass	220	B + C1	CAT III B + C1									
HLR-7A-F/F-30x1	30	900										150			150	140	150	1 3/4"-12 UNF	1 3/4"-12 UNF	270			
HLR-7A-F/F-35x1	35	1050										150	150		140	150	1 3/4"-12 UNF	1 3/4"-12 UNF	300				
HLR-8A-F/F-30x1	30	580	180	180	180	220	180	350 (HFC-350)	1/2" NPTF	1 3/4"-12 UNF		1 3/4"-12 UNF	240		CAT III B + C1	CAT III B + C1							
HLR-8A-F/F-35x1	35	680															180	180	170	180	1 3/4"-12 UNF	1 3/4"-12 UNF	260
HLR-8A-F/F-40x1	40	780															180	180	170	180	1 3/4"-12 UNF	1 3/4"-12 UNF	300
HLR-8A-F/F-45x1	45	870	220	220	200	250	250	450 (HFC-450)	1/2" NPTF	2 1/4"-12 UN		2 1/4"-12 UN	320		CAT III B + C1	CAT III B + C1							
HLR-8A-F/F-50x1	50	960															220	220	200	250	2 1/4"-12 UN	2 1/4"-12 UN	350
HLR-8A-F/F-60x1	60	1160															220	220	200	250	2 1/4"-12 UN	2 1/4"-12 UN	350
HLR-8A-F/F-70x1	70	1350	220	220	200	250	250	500 (HFC-500)	1/2" NPTF	2 1/4"-12 UN		2 1/4"-12 UN	330		CAT III B + C1	CAT III B + C1							
HLR-8A-F/F-80x1	80	1540									220			220			200	250	2 1/4"-12 UN	2 1/4"-12 UN	350		
HLR-9A-F/F-45x1	45	630									170			170			140	180	350 (HFC-350)	1/2" NPTF	1 3/4"-12 UNF	1 3/4"-12 UNF	320
HLR-9A-F/F-50x1	50	700	230	230	250	220	220	450 (HFC-450)	1/2" NPTF	2 1/4"-12 UN	2 1/4"-12 UN	350	CAT III B + C1	CAT III B + C1									
HLR-9A-F/F-60x1	60	840													230	230	250	220	450 (HFC-450)	1/2" NPTF	2 1/4"-12 UN	2 1/4"-12 UN	350
HLR-9A-F/F-70x1	70	960													230	230	250	220	450 (HFC-450)	1/2" NPTF	2 1/4"-12 UN	2 1/4"-12 UN	350
HLR-9A-F/F-80x1	80	1110	250	250	300	250	250	500 (HFC-500)	1/2" NPTF	2 1/4"-12 UN	2 1/4"-12 UN	400	CAT III B + C1	CAT III B + C1									
HLR-9A-F/F-90x1	90	1250													250	250	300	250	500 (HFC-500)	1/2" NPTF	2 1/4"-12 UN	2 1/4"-12 UN	450
HLR-9A-F/F-100x1	100	1400													250	250	300	250	500 (HFC-500)	1/2" NPTF	2 1/4"-12 UN	2 1/4"-12 UN	450
HLR-10A-F/F-100x1	100	900	300	300	350	250	250	550 (HFC-550)	1/2" NPTF	ODS 76	ODS 76	450	CAT III B + C1	CAT III B + C1									
HLR-10A-F/F-125x1	125	1110													300	300	350	250	550 (HFC-550)	1/2" NPTF	ODS 76	ODS 76	450
HLR-10A-F/F-150x1	150	1330													300	300	350	250	550 (HFC-550)	1/2" NPTF	ODS 76	ODS 76	450
HLR-11A-F/F-175x1	175	1270	330	330	350	250	250	650 (HFC-650)	1/2" NPTF	ODS 76	ODS 76	500	CAT III B + C1	CAT III B + C1									
HLR-11A-F/F-200x1	200	1450													330	330	350	250	650 (HFC-650)	1/2" NPTF	ODS 76	ODS 76	500
HLR-11A-F/F-225x1	225	1620													330	330	350	250	650 (HFC-650)	1/2" NPTF	ODS 76	ODS 76	500
HLR-12A-F/F-250x1	250	1450	330	330	350	250	250	650 (HFC-650)	1/2" NPTF	ODS 76	ODS 76	500	CAT III B + C1	CAT III B + C1									
HLR-12A-F/F-300x1	300	1750													330	330	350	250	650 (HFC-650)	1/2" NPTF	ODS 76	ODS 76	500
HLR-12A-F/F-350x1	350	2000													330	330	350	250	650 (HFC-650)	1/2" NPTF	ODS 76	ODS 76	500
HLR-12A-F/F-400x1	400	2300	330	330	350	250	250	650 (HFC-650)	1/2" NPTF	ODS 76	ODS 76	500	CAT III B + C1	CAT III B + C1									
HLR-12A-F/F-450x1	450	1800													330	330	350	250	650 (HFC-650)	1/2" NPTF	ODS 76	ODS 76	500
HLR-12A-F/F-500x1	500	2000													330	330	350	250	650 (HFC-650)	1/2" NPTF	ODS 76	ODS 76	500
HLR-13A-F/F-450x1	450	1800	330	330	350	250	250	650 (HFC-650)	1/2" NPTF	ODS 76	ODS 76	500	CAT III B + C1	CAT III B + C1									
HLR-13A-F/F-500x1	500	2000													330	330	350	250	650 (HFC-650)	1/2" NPTF	ODS 76	ODS 76	500
HLR-13A-F/F-550x1	550	2200	330	330	350	250	250	650 (HFC-650)	1/2" NPTF	ODS 76	ODS 76	500											

Technical Data



The following list includes standard products only.

Upon special request, these standard products can be modified according to the Directive 97/23/EC.

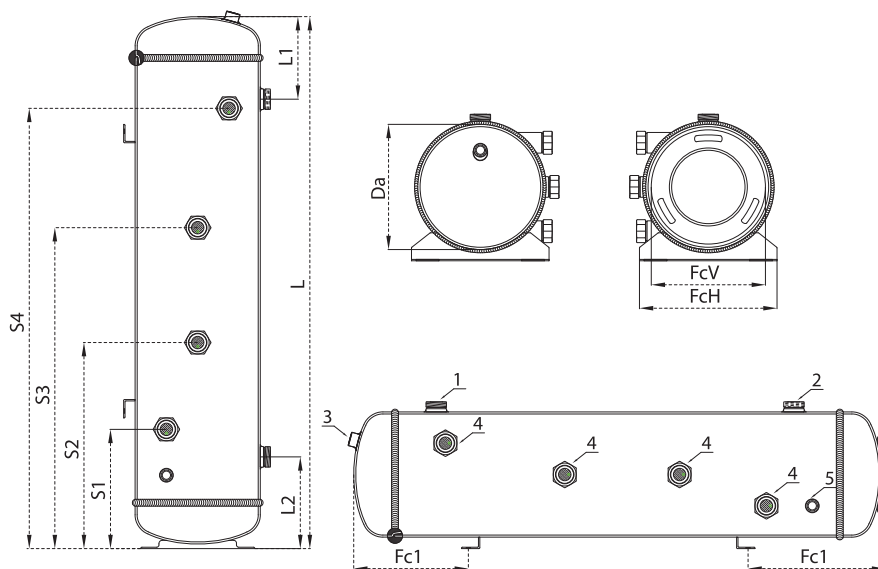
- Sight glass may be reduced or increased according to the requirement.
- Sight glasses may be produced in various dimensions according to the requirement.
- Inlet & Outlet connections can be used in various dimensions and features according to the requirement.
- Liquid level sensor connections can be used according to the requirement.

1/2" NPT connection is used as standard. However, LLS-01 model that is supplied by us uses M20x1.5 coupling sleeves.

Please see the page 45 for further information about the product.

- Different coupling sleeves may be used according to the safety valve that you will use and its connection.

• Products in different volume and design may be produced upon request. Please contact us for further detail.



- 1 Outlet Connection
- 2 Inlet Connection
- 3 Safety Valve Connection
- 4 Sight Glass (optional)
- 5 Liquid Level Sensor Connection (optional)

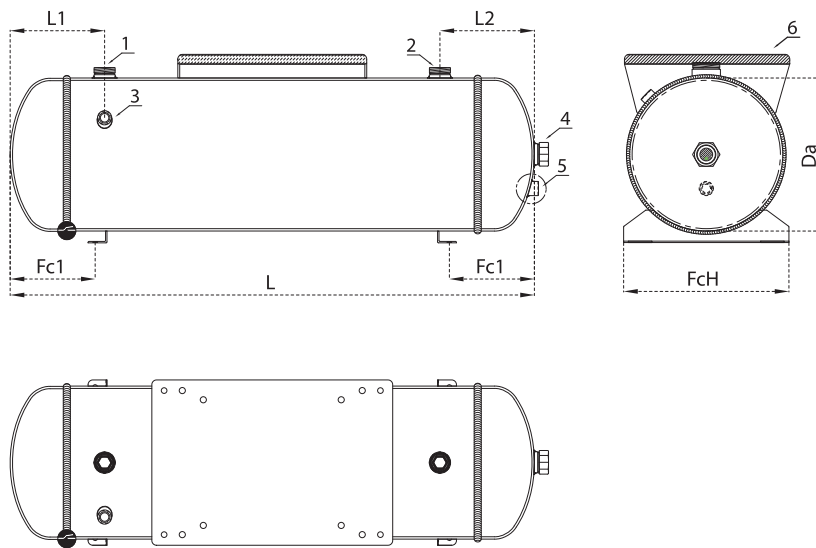
Model	Volume (Lt)	Diameter	Dimensions					Connections			Type	Sight Glass				CE		
			L (mm)	L1 (mm)	L2 (mm)	FcV (mm)	FcH (mm)	Fc1 (mm)	Sv (Inch)	Inlet (Inch)		Outlet (Inch)	S1 (mm)	S2 (mm)	S3 (mm)	S4 (mm)	PED 32 Bar	97/23/EC 45 Bar
HVLR-7D-F/F-20x2	20	∅219	620	150	150	∅182	240	170-230	1/2" NPTF	1 1/4"-12 UNF	1 1/4"-12 UNF	SW36	210	450	-	-	CAT I A1	CAT II / A1 B+C1
HVLR-7D-F/F-30x2	30	∅219	900	150	150	∅182	240	250	1/2" NPTF	1 1/4"-12 UNF	1 1/4"-12 UNF		230	730	-	-	CAT I A1	CAT II / A1 B+C1
HVLR-8D-F/F-40x2	40	∅273	780	180	200	∅249	300	200-250	1/2" NPTF	1 3/4"-12 UNS	1 3/4"-12 UNS	Rotolock Sight Glass	230	580	-	-	CAT III B+C1	CAT III B+C1
HVLR-8D-F/F-50x2	50	∅273	960	180	200	∅249	300	300	1/2" NPTF	1 3/4"-12 UNS	1 3/4"-12 UNS		260	770	-	-	CAT III B+C1	CAT III B+C1
HVLR-8D-F/F-60x3	60	∅324	1160	220	240	∅320	350	300	1/2" NPTF	2 1/4"-12 UN	2 1/4"-12 UN	1 3/4" Rotolock Sight Glass	300	660	1150	-	CAT IV B+D	CAT IV B+D
HVLR-8D-F/F-70x3	70	∅324	1350	220	240	∅320	350	300	1/2" NPTF	2 1/4"-12 UN	2 1/4"-12 UN		260	540	860	-	CAT IV B+D	CAT IV B+D
HVLR-9D-F/F-80x3	80	∅324	1110	220	240	∅320	350	300	1/2" NPTF	2 1/4"-12 UN	2 1/4"-12 UN	1 3/4" Rotolock Sight Glass	260	580	1000	-	CAT IV B+D	CAT IV B+D
HVLR-9D-F/F-90x3	90	∅324	1250	220	240	∅320	350	300	1/2" NPTF	2 1/4"-12 UN	2 1/4"-12 UN		260	580	1000	-	CAT IV B+D	CAT IV B+D
HVLR-9D-F/F-100x3	100	∅406	1400	250	330	∅430	450	350	1/2" NPTF	2 1/4"-12 UN	2 1/4"-12 UN	1 3/4" Rotolock Sight Glass	260	660	1480	-	CAT IV B+D	CAT IV B+D
HVLR-9D-F/F-125x3	125	∅406	1730	250	330	∅430	450	350	1/2" NPTF	2 1/4"-12 UN	2 1/4"-12 UN		320	630	1070	-	CAT IV B+D	CAT IV B+D
HVLR-10D-F/F-150x3	150	∅406	1330	250	330	∅430	450	350	1/2" NPTF	2 1/4"-12 UN	2 1/4"-12 UN	1 3/4" Rotolock Sight Glass	320	630	1070	-	CAT IV B+D	CAT IV B+D
HVLR-10D-F/F-225x4	225	∅406	2000	250	330	∅430	450	350	1/2" NPTF	2 1/4"-12 UN	2 1/4"-12 UN		320	630	1070	1740	CAT IV B+D	CAT IV B+D

HORIZONTAL LIQUID RECEIVERS



The following list includes standard products only.
Upon special request, these standard products can be modified according to the Directive 97/23/EC.

- Sight glass may be reduced or increased according to the requirement.
 - Sight glasses may be produced in various dimensions according to the requirement.
 - Inlet & Outlet connections can be used in various dimensions and features according to the requirement.
 - Liquid level sensor connections can be used according to the requirement. 1/2"-NPT connection is used as standard. However, LLS-01 model that is supplied by us uses M20x1.5 coupling sleeves.
- Please see the page 45 for further information about the product.
- Different coupling sleeves may be used according to the safety valve that you will use and its connection.
 - Plates may be made in special dimensions upon request.
- Products in different volume and design may be produced upon request.
Please contact us for further detail.



- 1 Outlet Connection
- 2 Inlet Connection
- 3 Safety Valve Connection
- 4 Sight Glass (optional)
- 5 Liquid Level Sensor Connection (optional)
- 6 Plate For Compressor

Model	Volume (Lt)	Diameter	Dimensions							Connections			Sight Glasses	CE	
			L (mm)	L1 (mm)	L2 (mm)	L3 (mm)	Fc1 (mm)	Fc (mm)	Sv (Inch)	Inlet (Inch)	Outlet (Inch)	PED 32 Bar		97/23/EC 45 Bar	
HLR-7D-F/F-30x1	30	Ø 219	900	120	120	120	120	240 (HFC-240)	1/2" NPTF	1 1/4"-12 UNF	1 1/4"-12 UNF	SW36	CAT II /A1	CAT II /A1	
HLR-7D-F/F-40x1	40		1050	140	140	140				1 3/4"-12 UNS	1 3/4"-12 UNS				
HLR-8D-F/F-50x1	50		970	130	130	130									
HLR-8D-F/F-60x1	60	Ø 273	1160	150	150	150	150	300 (HFC-300)	1/2" NPTF	1 3/4"-12 UNS	1 3/4"-12 UNS	1 3/4" Rotolock Sight Glass	CAT III B+C1	CAT III B+C1	
HLR-8D-F/F-70x1	70		1350	180	180	180									
HLR-9D-F/F-80x1	80		1110	200	200	200									
HLR-9D-F/F-90x1	90	Ø 324	1250	220	240	240	180	350 (HFC-350)	1/2" NPTF	2 1/4"-12 UN	1 3/4"-12 UNS	1 3/4" Rotolock Sight Glass	CAT IV B+D	CAT III/B+C1	
HLR-9D-F/F-100x1	100		1400												

Technical Data



The following list includes standard products only.

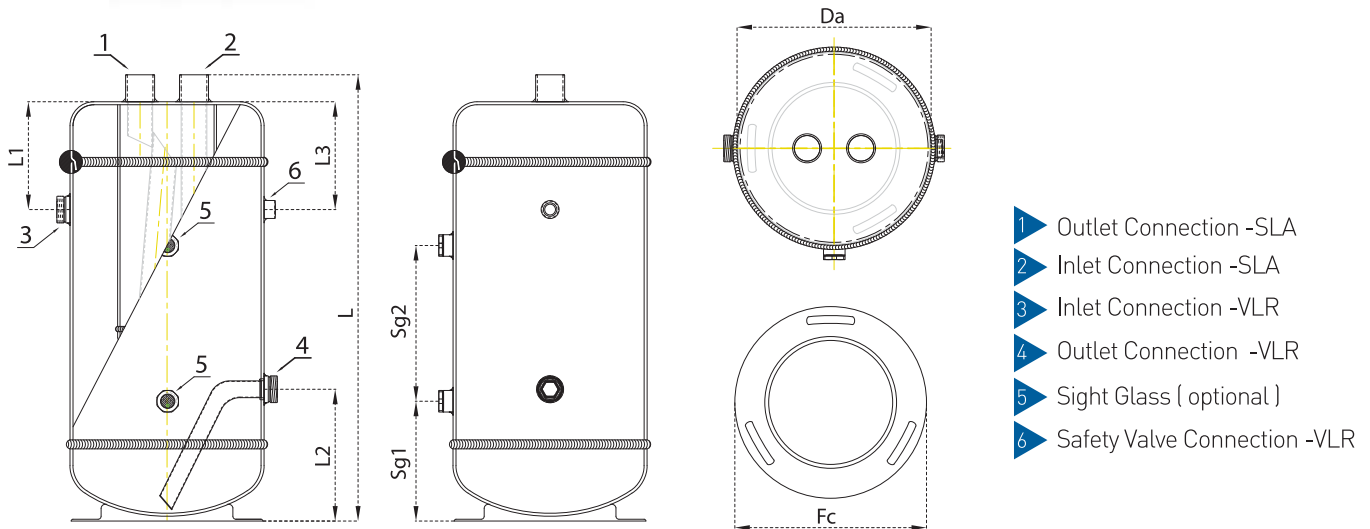
Upon special request, these standard products can be modified according to the Directive 97/23/EC.

- Sight glass may be reduced or increased according to the requirement.
 - Sight glasses may be produced in various dimensions according to the requirement.
 - Inlet & Outlet connections can be used in various dimensions and features according to the requirement.
 - Liquid level sensor connections can be used according to the requirement.
- 1/2" NPT connection is used as standard. However, LLS-01 model that is supplied by us uses M20x1.5 coupling sleeves.

Please see the page 45 for further information about the product.

- Different coupling sleeves may be used according to the safety valve that you will use and its connection.
- Products in different volume and design may be produced upon request.

Please contact us for further detail.



- 1 Outlet Connection -SLA
- 2 Inlet Connection -SLA
- 3 Inlet Connection -VLR
- 4 Outlet Connection -VLR
- 5 Sight Glass (optional)
- 6 Safety Valve Connection -VLR

Model	VLR Volume (Lt)	SLA Volume (Lt)	Diameter	Dimensions				Connections			Type	Sight Glasses		CE		
				L (mm)	L1 (mm)	L2 (mm)	L3 (mm)	Fc (mm)	Sv (Inch)	Inlet (Inch)		Outlet (Inch)	S1 (mm)	S2 (mm)	PED 32 Bar	97/23/EC 45 Bar
VLR-SLA-6/19x1	6	1,7	Ø219	282	80	120	-	Ø 249 (VFC-249)	-	1"-14 UNS	1"-14 UNS	SW36 Screw Sight Glass	120	-	CAT I / A1	CAT II A1
VLR-SLA-8/22x1	8	3,8		420	80	150	80						140	-		
VLR-SLA-10/22x1	10			480	80	160	80						140	160		
VLR-SLA-12/22x1	12			540	100	160	100						140	180		
VLR-SLA-16/28x2	16	5,1	Ø273	1050	100	160	100	Ø 249 (VFC-249)	1/2" NPTF	1 1/4"-12 UNF	1 1/4"-12 UNF	SW36 Screw Sight Glass	140	280	CAT II A1	CAT II A1
VLR-SLA-20/28x1	20			500	140	180	140						160	-		
VLR-SLA-30/35x2	30	8,1	Ø324	810	140	180	140	Ø 320 (VFC-320)	1 3/4"-12 UNS	1 3/4"-12 UNS	1 3/4"-12 UNS	SW36 Screw Sight Glass	160	260	CAT III B+C1	CAT III B+C1
VLR-SLA-40/42x2	40			745	180	220	180						200	260		
VLR-SLA-50/54x2	50			13,5	1000	180	220						180	200		

LIQUID RECEIVERS



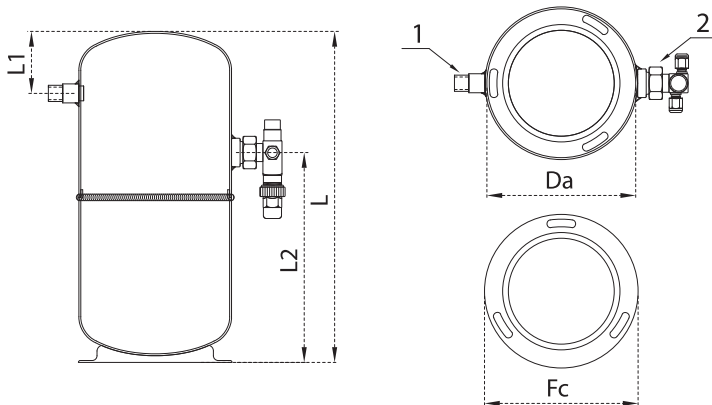
The following list includes standard products only.
Upon special request, these standard products can be modified according to the Directive 97/23/EC.

- Sight glass may be reduced or increased according to the requirement.
 - Sight glasses may be produced in various dimensions according to the requirement.
 - Inlet & Outlet connections can be used in various dimensions and features according to the requirement.
 - Liquid level sensor connections can be used according to the requirement.
- 1/2" NPT connection is used as standard. However, LLS-01 model that is supplied by us uses M20x1.5 coupling sleeves.
- Please see the page 45 for further information about the product.
- Different coupling sleeves may be used according to the safety valve that you will use and its connection.



- Products in different volume and design may be produced upon request.

Please contact us for further detail.



1 ▶ Outlet Connection
2 ▶ Inlet Connection

Vertical Liquid Receivers (Deep Drawn)

Model	Volume (Lt)	Dimensions					Connections			CE 97/23/EC 32 Bar
		Da (mm)	L (mm)	L1 (mm)	L2 (mm)	Fc (mm)	Inside Solder	Outside Rotolock Connection	Outside Rotolock Valve	
VLR-01	1	∅ 89	200	45			1/4" ODS	1" Rot.	1/4" ODS	SEP
VLR-02	2	∅ 120	210	50	140	∅ 135 (VFC-135)	3/8" ODS	1" Rot.	3/8" ODS	
VLR-03	3	∅ 140	228	55	150	∅ 161 (VFC-161)				1/2" ODS
VLR-04	4		298	60	185					
VLR-05	5	∅ 160	297	65	220	∅ 182 (VFC-182)	5/8" ODS	1" Rot.	5/8" ODS	CAT II A1
VLR-06	6		347		250					
VLR-08	8	∅ 180	380	80	240	210	3/4" ODS	1" Rot.		
VLR-09	9		410		255					
VLR-10	10		460		270					
VLR-12	12	∅ 219	360	80	220	∅ 182 (VFC-182)	5/8" ODS	1" Rot.	5/8" ODS	CAT II A1
VLR-14	14		410		250					
VLR-16	16		480							
VLR-18	18		540							
VLR-21	21		610							