

**COMPRESSOR**

Displacement (cm <sup>3</sup> )	5.98
Diameter (mm)	20.88
Stroke (mm)	17.48
Net Weight (Kg)	10.2
Oil type	ISO VG 46 ESTER
Oil charge (cm <sup>3</sup> )	300

**MOTOR**

Approximate Power (CV)	1/5
Voltage/Frequency (V/Hz)	220V 50Hz
Voltage range (V)	187-264
Code	65.527
Type	CSIR
Phase number	1 PH
Locked rotor current (A)	9.0
Main W. resist. at 25°C (Ω)	9.07
Start W. resist. at 25°C (Ω)	11.8

**APPLICATION**

Application	Low back pressure
Refrigerant	R404A
Evaporating (°C)	-40 to -10
Expansion	Capillar/Valve
Comp. cooling	Fan cooled
Max. ambient temp. (°C)	43

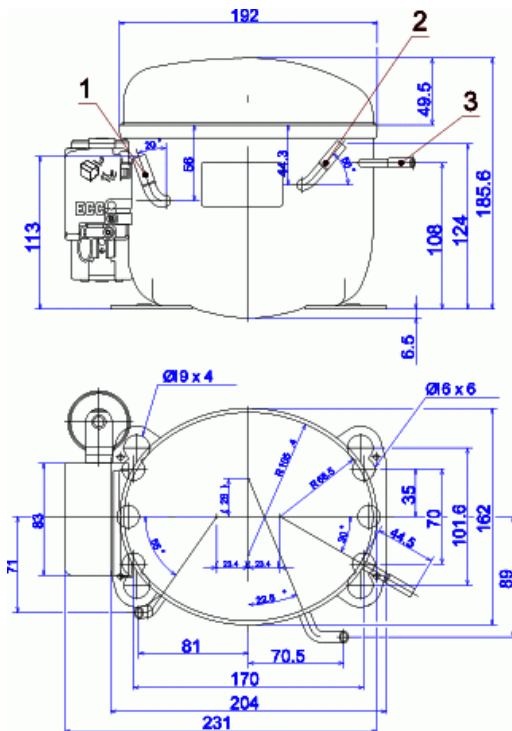
NOMINAL PERFORMANCE	CYCLE A	CYCLE B
Cooling capacity (kcal/h)	153	225
Input power (W)	249	260
EER (kcal/Wh)	0.61	0.86
COP (W/W)	0.71	1.00
Current (A)	1.56	1.60

**TEST CONDITIONS**

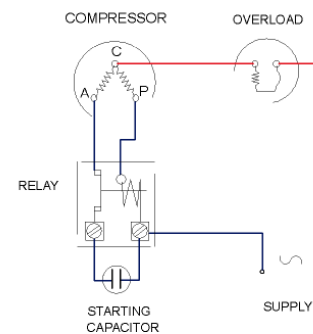
Evaporating temp. (°C)	-25.0	-23.3
Condensing temp. (°C)	55.0	55.0
Liq.t. entering expan. (°C)	55.0	32.0
Ambient t. and return (°C)	32.0	32.0
Tens/Freq (V/Hz)	220V 50Hz	220V 50Hz

**ELECTRICAL COMPONENTS**

Relay	2014 127.		
Pick-Up (A)	4,80		
Drop-Out (A)	4,10		
Protector	MRP63AMK	T0069	AE26FHY
Current (A)	7.1	7.1	7.1
Time check (seg)	7.5-14	7.5-14	7.5-14
Disc temp. (Open/Close) (°C)	105.0 / 61.0	105.0 / 62.0	105.0 / 62.0
Starting capacitor (μF/V)/FV)	47- 56 / 250		

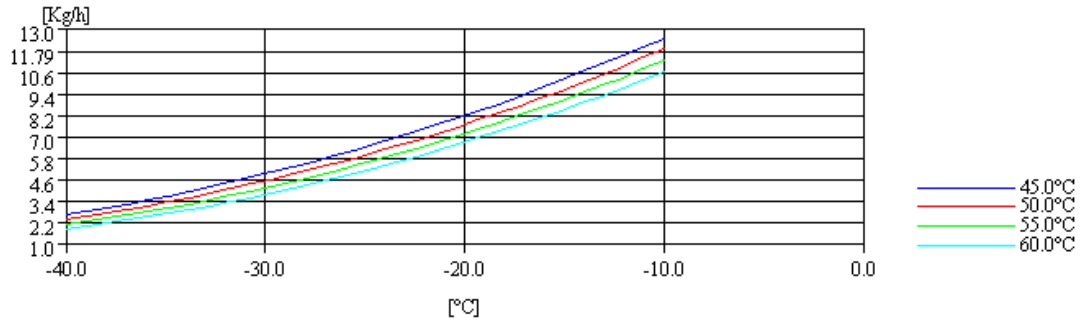
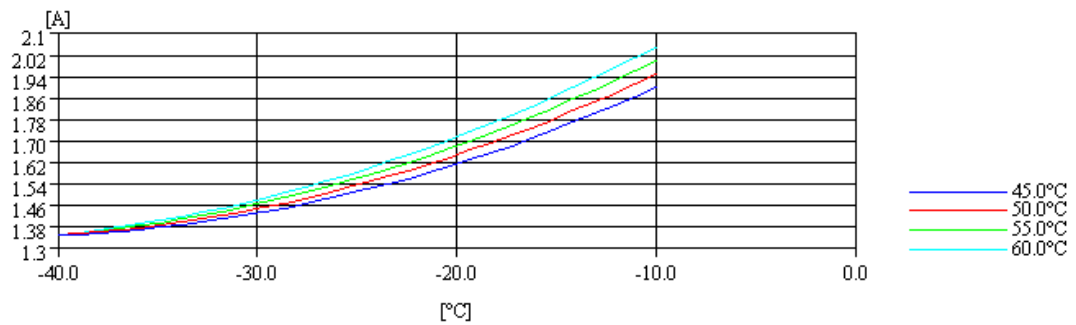
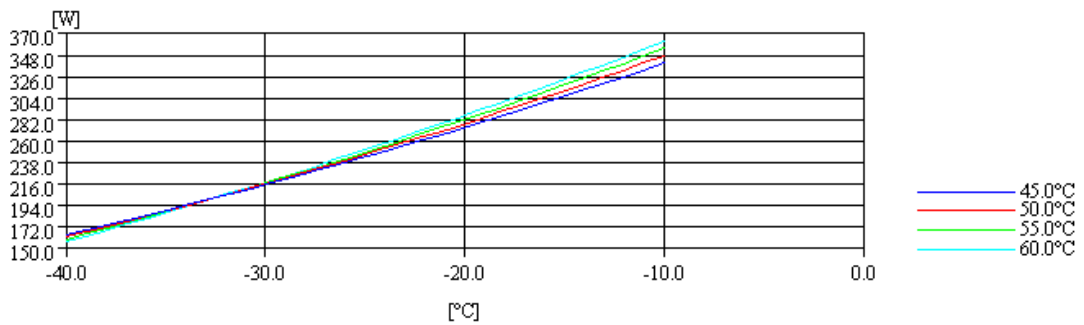
**DIMENSIONS AND ELECTRICAL DIAGRAM**


DESIGNATION	INTERNAL DIAM. (MM)
1 Suction/Service	6,5
2 Service/Suction	6,5
3 Discharge	4,9

**CSIR**


**TEST CONDITIONS**

Voltage/frequency	220V 50Hz
Ambient t. and return	32 °C
Liq.t. entering expan.	Subcooling at 32 °C

**MASS FLOW**

**INTENSITY**

**CONSUMPTION**

**COOLING CAPACITY**
