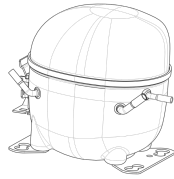


**220-240V 50 1~****GENERAL DATA**

**Application:** LBP  
**Refrigerant:** R134a  
**Evaporating Temperature Range:** -30°C to -5°C  
**Compressor Cooling:** Static  
**Type:** Hermetic reciprocating  
**Technology Type:** On-Off  
**Expansion Device:** Capillary Tube or Expansion Valve  
**Packing Quantity:** Single - 1 pc  
**Displacement:** 7.37 cm<sup>3</sup>  
**Horse power:** 1.5 hp

Approvals:   

**MECHANICAL DATA**

**Bore:** 24.28 mm  
**Stroke:** 15.92 mm  
**Oil Charge:** 350ml +/-15ml  
**Free Internal Volume:** 2.1 cm<sup>3</sup>  
**Maximum Recommended Refrigerant Charge:** 350 g  
**Oil Type Configuration:** Polyolester  
**Oil Type Viscosity:** ISO22  
**Compressor pressurization:** Dry air charge  
**Weight:** 10.2 kg

**ELECTRICAL DATA**

**Motor Type:** CSIR  
**Starting Torque:** HST  
**Voltage working range at 50 Hz:** 198-254 V  
**Maximum Motor Temperature:** 130 °C  
**Start Winding Resistance:** 35 Ω (± 10%) at 25°C  
**Run Winding Resistance:** 10 Ω (± 10%) at 25°C  
**Locked Rotor Amperage (LRA):** 10 A

**MOUNTING ACCESSORIES**

|                                    | Description | Code    |
|------------------------------------|-------------|---------|
| <b>Anchorage:</b>                  | no          | -       |
| <b>Capacitor Bracket:</b>          | no          | -       |
| <b>Washer:</b>                     | no          | -       |
| <b>Pin:</b>                        | no          | -       |
| <b>Clip:</b>                       | no          | -       |
| <b>Rotolock valve:</b>             | no          | -       |
| <b>Cover:</b>                      | yes         | 2075282 |
| <b>Grommets:</b>                   | yes         | 2221011 |
| <b>Sleeves:</b>                    | yes         | 2222018 |
| <b>Terminal Board:</b>             | yes         | 1027060 |
| <b>Overload Protector Bracket:</b> | yes         | 2075299 |

**ELECTRICAL COMPONENTS**

|                          | Component type | Description    | Code    |
|--------------------------|----------------|----------------|---------|
| <b>Start Capacitor:</b>  |                | 53-64 MFD 330V | 2252346 |
| <b>Starting Device:</b>  | Current relay  | MTRP-0046-65   | 2334145 |
| <b>Motor Protection:</b> | External 3/4"  | T0827/G6       | 2319087 |

**EXTERNAL CHARACTERISTICS**

**Base Plate:** European  
**Tray Holder:** No  
**Height:** 188 mm

|                            | Internal Diameter (mm) | Material | Shape       |
|----------------------------|------------------------|----------|-------------|
| <b>Suction Connector</b>   | 6.1                    | Copper   | Slanted 42° |
| <b>Discharge Connector</b> | 4.86                   | Copper   | Straight    |
| <b>Process Connector</b>   | 6.1                    | Copper   | Slanted 42° |



**RATED POINT DATA**

| Cooling Capacity (W) | Power Consumption (W) | Current Consumption (A) | Gas Flow Rate (kg/h) | Efficiency (W/W) |
|----------------------|-----------------------|-------------------------|----------------------|------------------|
| ±5%                  | ±5%                   | ±5%                     | ±5%                  | ±7%              |
| 97                   | 102                   | 1.00                    | 2.06                 | 0.95             |

Test condition: EN 12900, Static, Return Gas 20°C, Subcooling OK, Evaporating: -35°C, Condensing: 40°C, Ambient: 35°C

**PERFORMANCE CURVE DATA****220V 50Hz**

| Condensing Temperature (°C) | Evaporating Temperature (°C) | Cooling Capacity (W) | Power Consumption (W) | Current Consumption (A) | Gas Flow Rate (kg/h) | Efficiency (W/W) |
|-----------------------------|------------------------------|----------------------|-----------------------|-------------------------|----------------------|------------------|
|                             |                              | ±5%                  | ±5%                   | ±5%                     | ±5%                  | ±7%              |
| <b>35°C</b>                 | -5                           | 500                  | 217                   | 1.35                    | 10.67                | 2.31             |
|                             | -10                          | 408                  | 194                   | 1.27                    | 8.70                 | 2.10             |
|                             | -15                          | 326                  | 173                   | 1.20                    | 6.93                 | 1.88             |
|                             | -20                          | 255                  | 153                   | 1.14                    | 5.37                 | 1.66             |
|                             | -25                          | 194                  | 135                   | 1.08                    | 4.07                 | 1.44             |
|                             | -30                          | 145                  | 118                   | 1.04                    | 3.03                 | 1.23             |

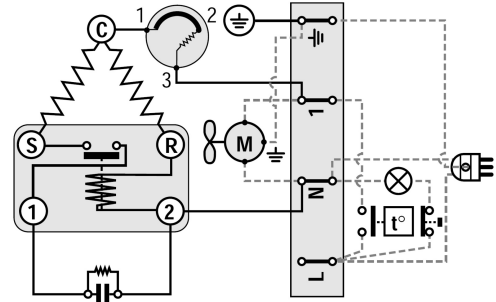
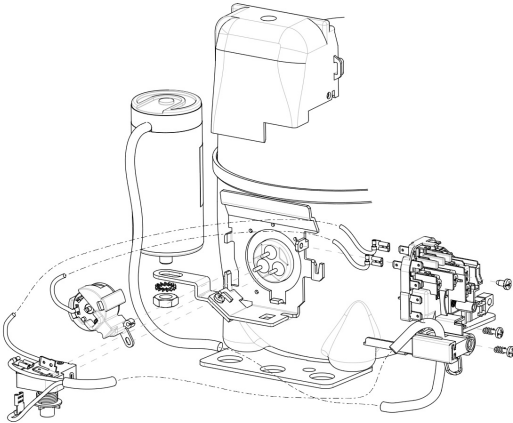
| Condensing Temperature (°C) | Evaporating Temperature (°C) | Cooling Capacity (W) | Power Consumption (W) | Current Consumption (A) | Gas Flow Rate (kg/h) | Efficiency (W/W) |
|-----------------------------|------------------------------|----------------------|-----------------------|-------------------------|----------------------|------------------|
|                             |                              | ±5%                  | ±5%                   | ±5%                     | ±5%                  | ±7%              |
| <b>45°C</b>                 | -5                           | 437                  | 236                   | 1.42                    | 10.26                | 1.85             |
|                             | -10                          | 356                  | 209                   | 1.32                    | 8.32                 | 1.70             |
|                             | -15                          | 283                  | 184                   | 1.23                    | 6.56                 | 1.54             |
|                             | -20                          | 220                  | 160                   | 1.16                    | 5.01                 | 1.37             |
|                             | -25                          | 166                  | 139                   | 1.10                    | 3.68                 | 1.20             |
|                             | -30                          | 122                  | 119                   | 1.05                    | 2.62                 | 1.02             |

| Condensing Temperature (°C) | Evaporating Temperature (°C) | Cooling Capacity (W) | Power Consumption (W) | Current Consumption (A) | Gas Flow Rate (kg/h) | Efficiency (W/W) |
|-----------------------------|------------------------------|----------------------|-----------------------|-------------------------|----------------------|------------------|
|                             |                              | ±5%                  | ±5%                   | ±5%                     | ±5%                  | ±7%              |
| <b>55°C</b>                 | -5                           | 377                  | 256                   | 1.50                    | 9.84                 | 1.48             |
|                             | -10                          | 305                  | 223                   | 1.37                    | 7.94                 | 1.37             |
|                             | -15                          | 241                  | 193                   | 1.26                    | 6.21                 | 1.25             |
|                             | -20                          | 184                  | 166                   | 1.17                    | 4.67                 | 1.11             |
|                             | -25                          | 136                  | 141                   | 1.10                    | 3.34                 | 0.96             |

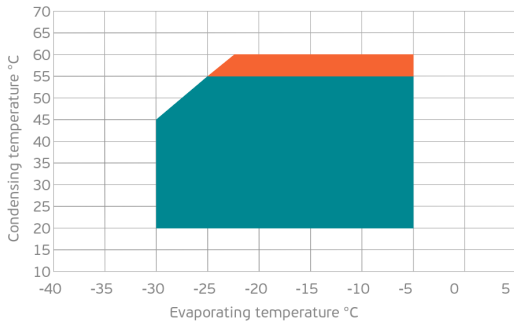
Test condition: EN 12900, Static, Return Gas 20°C, Subcooling OK, Ambient: 35°C

**ASSEMBLY INSTRUCTION**

**WIRING DIAGRAM**

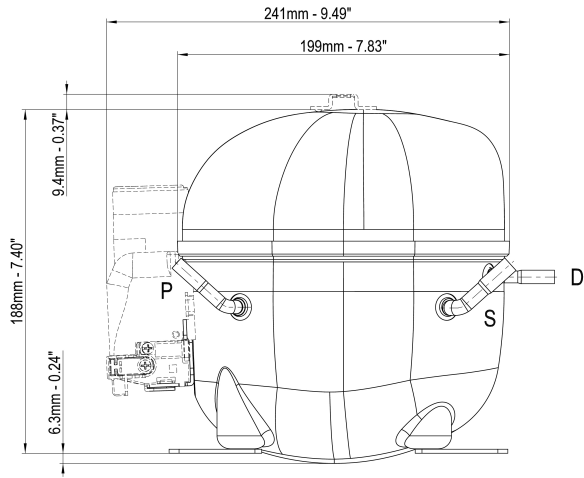


**OPERATING ENVELOPE**



- Operating Condition
- Transient Condition
- Superheating

**NOTE:** usage of compressors outside of intended working range cannot make use of the warranty, or should be consulted with Technical support.



|                      | ∅ mm        | ∅ in | Material |
|----------------------|-------------|------|----------|
| <b>S - Suction</b>   | 6.10 - 6.20 | 0.24 | Cu       |
| <b>P - Process</b>   | 6.10 - 6.20 | 0.24 | Cu       |
| <b>D - Discharge</b> | 4.86 - 5.03 | 0.19 | Cu       |

