

**380-420V 50 / 440-480V 60Hz 3~****GENERAL DATA****Application:** M/HBP**Refrigerant:** R404A**Evaporating Temperature Range:** -20°C to 10°C**Compressor Cooling:** Fan**Fan air flow:** 800 m<sup>3</sup>/h**Type:** Hermetic reciprocating**Technology Type:** On-Off**Expansion Device:** Capillary Tube or Expansion Valve**Packing Quantity:** Single - 1 pc**Displacement:** 26.1 cm<sup>3</sup>**Horse power:** 1.5 hp
**Approvals:**





**MECHANICAL DATA****Bore:** 41.77 mm**Stroke:** 19.07 mm**Oil Charge:** 750ml +/-15ml**Free Internal Volume:** 3.9 cm<sup>3</sup>**Maximum Recommended Refrigerant Charge:** 800 g**Oil Type Configuration:** Polyolester**Oil Type Viscosity:** ISO22**Compressor pressurization:** Dry air charge**Weight:** 20 kg**ELECTRICAL DATA****Motor Type:** 3PHASE**Starting Torque:** HST**Voltage working range at 50 Hz:** 332-445 V**Voltage working range at 60 Hz:** 396-509 V**Maximum Motor Temperature:** 130 °C**Run Winding Resistance:** 15.1 Ω (± 10%) at 25°C**MOUNTING ACCESSORIES**

	Description	Code
<b>Cover:</b>	yes	2075281
<b>Terminal Board:</b>	no	-
<b>Anchorage:</b>	no	-
<b>Overload Protector Bracket:</b>	no	-
<b>Capacitor Bracket:</b>	no	-
<b>Grommets:</b>	yes	2221004
<b>Sleeves:</b>	yes	2222016
<b>Washer:</b>	no	-
<b>Pin:</b>	no	-
<b>Clip:</b>	no	-
<b>Rotolock valve:</b>	no	-

**ELECTRICAL COMPONENTS**

	Component type	Description	Code
<b>Motor Protection:</b>	Internal		34HM207

**EXTERNAL CHARACTERISTICS****Base Plate:** Large**Tray Holder:** No**Height:** 276 mm

	Internal Diameter (mm)	Material	Shape
<b>Suction Connector</b>	12.77	Copper	Vertical
<b>Discharge Connector</b>	8	Copper	Slanted 65°
<b>Process Connector</b>	6.42	Copper	Vertical

**RATED POINT DATA**

Cooling Capacity (W)	Power Consumption (W)	Current Consumption (A)	Gas Flow Rate (kg/h)	Efficiency (W/W)
±5%	±5%	±5%	±5%	±7%
4 113	1 599	2.78	114.72	2.57

Test condition: ASHRAE, Fan, Return Gas 35°C, Subcooling 8.3K, Evaporating: 7.2°C, Condensing: 54°C, Ambient: 35°C

**PERFORMANCE CURVE DATA**

**380V 50Hz**

Condensing Temperature (°C)	Evaporating Temperature (°C)	Cooling Capacity (W)	Power Consumption (W)	Current Consumption (A)	Gas Flow Rate (kg/h)	Efficiency (W/W)
<b>35°C</b>		±5%	±5%	±5%	±5%	±7%
	10	6 190	1 335	2.41	140.75	4.64
	5	5 166	1 275	2.38	116.21	4.05
	0	4 253	1 206	2.29	94.73	3.53
	-5	3 451	1 129	2.15	76.18	3.06
	-10	2 759	1 044	1.99	60.45	2.64
	-15	2 177	951	1.81	47.42	2.29
-20	1 706	850	1.66	36.97	2.01	

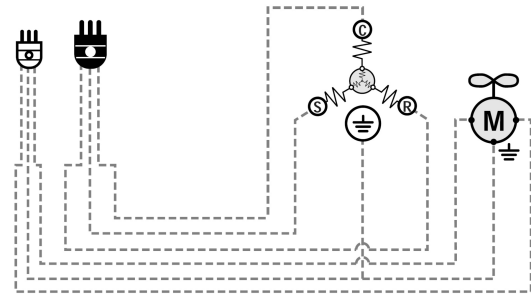
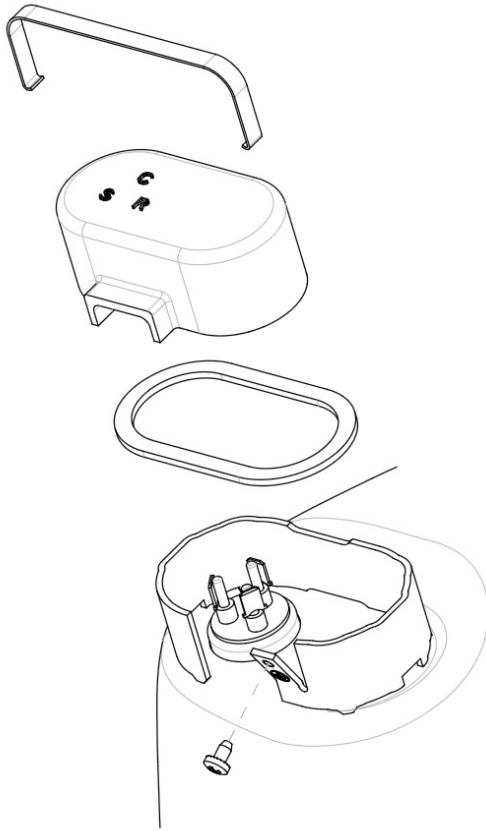
Condensing Temperature (°C)	Evaporating Temperature (°C)	Cooling Capacity (W)	Power Consumption (W)	Current Consumption (A)	Gas Flow Rate (kg/h)	Efficiency (W/W)
<b>45°C</b>		±5%	±5%	±5%	±5%	±7%
	10	5 337	1 512	2.63	134.44	3.53
	5	4 455	1 412	2.56	110.95	3.15
	0	3 665	1 309	2.43	90.32	2.80
	-5	2 967	1 203	2.26	72.43	2.47
	-10	2 360	1 094	2.06	57.17	2.16
	-15	1 846	982	1.87	44.40	1.88
-20	1 424	868	1.69	34.03	1.64	

Condensing Temperature (°C)	Evaporating Temperature (°C)	Cooling Capacity (W)	Power Consumption (W)	Current Consumption (A)	Gas Flow Rate (kg/h)	Efficiency (W/W)
<b>55°C</b>		±5%	±5%	±5%	±5%	±7%
	10	4 453	1 694	2.85	126.82	2.63
	5	3 716	1 554	2.74	104.47	2.39
	0	3 052	1 416	2.57	84.79	2.16
	-5	2 462	1 280	2.36	67.65	1.92
-10	1 945	1 146	2.14	52.95	1.70	

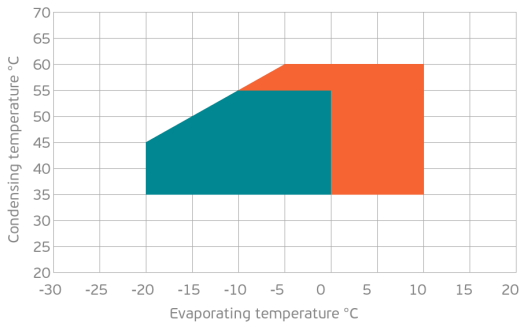
Test condition: ASHRAE, Fan, Return Gas 35°C, Subcooling 8.3K, Ambient: 35°C

**ASSEMBLY INSTRUCTION**

**WIRING DIAGRAM**

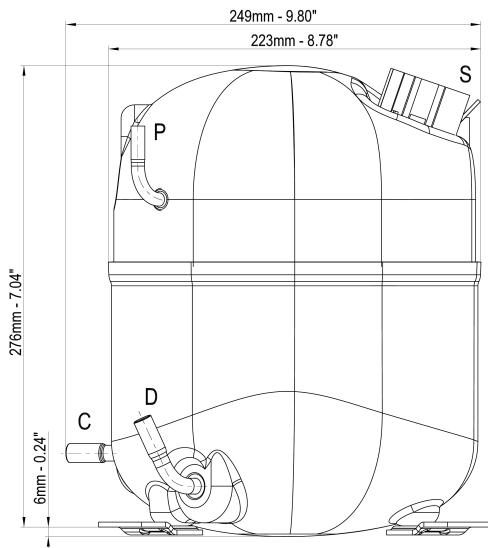


**OPERATING ENVELOPE**



- Operating Condition
- Transient Condition
- Superheating

**NOTE:** usage of compressors outside of intended working range cannot make use of the warranty, or should be consulted with Technical support.



	∅ mm	∅ in	Material
<b>S - Suction</b>	12.77 - 12.85	0.50	Cu
<b>P - Process</b>	6.42 - 6.50	0.25	Cu
<b>D - Discharge</b>	8.00 - 8.50	0.31	Cu
<b>C - Connection</b>	8.00 - 8.50	0.31	Cu

