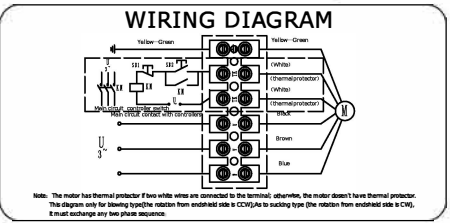


UNIT	Axial fan motor
MOTOR	Three phases motor
MOTOR TYPE	RW4-450 400V PUHALTAVA
VOLTAGE (V)	400
FREQUENCY (Hz)	50
INPUT POWER (W)	250
CURRENT (A)	0.55
SPEED (r/min)	1350
AIR FLOW (m³/h)	5140
NOISE (dBA)	69
ROTATION	CCW ,looking into the end-shield
INSULATION CLASS	B
MOTOR PROTECTION	Thermocontact 135±5°C
TEMPERATURE RISE	75K max
PROTECTION CLASS	IP54
OPERATING TYPE	S1
AMBIENT TEMPERATURE	-30°C +60°C
BEARINGS	Ball bearings
MOUNTING TYPE	Horizontal or Vertical
ELECTRICAL CONNECTION	Lead wire Silikon 4G 0.50mm²+2G 0.30mm², Length 100mm in terminal box connected (40.5mm²+20.3mm² ≤100mm)
APPROVALS	CCC、CE
NET WEIGHT/GROSS WEIGHT	8.0/9.0kg
PACKING	48.5*48.5*22cm

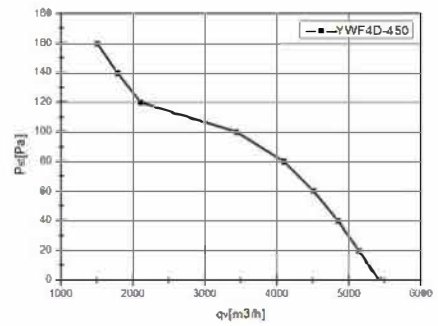
LABEL :

REFPOWER Axial Fan Motor
RW4-450 400V PUHALTAVA
 400 50Hz 0.55A 180/250W 1350r/min
 CL.B XX/XX

WIRING DIAGRAM :



FLOW RATE CURVE :



ErP2015 LABEL:

ErP2015 (N40)
 N=44.11 η_{statA} = 34.4%
 RW4-450 400V PUHALTAVA

						SIGN	DATE	TITLE <h2 style="text-align: center;">RW4-450 400V PUHALTAVA</h2>
						DRN. BY		
						CHD. BY		
						ENG. BY		
REV.	DESCRIPTION	APPROVED	DATE			APP. BY		PROJECTION