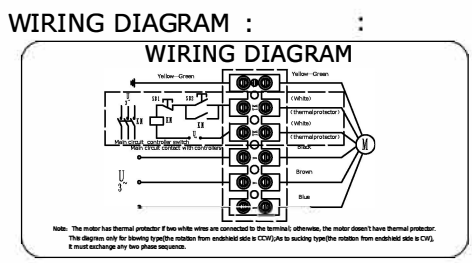
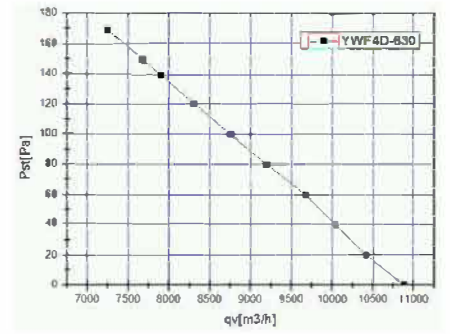


LABEL :

Axial Fan Motor
RW4-630 400V IMEVÄ
 400V 50Hz 1.60A 600/800W 1320r/min
 CL.B XX/XX



FLOW RATE CURVE :



ErP2015 LABEL:

ErP2015 (N40)
 $N=46.48 \quad \eta_{statA} = 40.1\%$
RW4-630 400V IMEVÄ

UNIT	Axial fan motor
MOTOR	Three phases motor
MOTOR TYPE	RW4-630 400V IMEVÄ
VOLTAGE (V)	400
FREQUENCY (Hz)	50
INPUT POWER (W)	800
CURRENT (A)	1.60
SPEED (r/min)	1320
AIR FLOW 20Pa (m³/h)	10420
NOISE (dBA)	75
CAPACITOR ($\mu F/450V$)	-
ROTATION	CW, looking into the end-shield
INSULATION CLASS	B
MOTOR PROTECTION	Thermocontact 135±5°C
TEMPERATURE RISE	75K max
TYPE OF PROTECTION	IP54
OPERATING TYPE	S1
AMBIENT TEMPERATURE	-30°C +60°C
BEARINGS	Ball bearings
MOUNTING TYPE	Horizontal or Vertical
ELECTRICAL CONNECTION	Lead wire Silikon 4G 0.75mm²+2G 0.30mm², Length 100mm in terminal box connected (4.0.75mm²+2.0.30mm² 100mm)
APPROVALS	CCC, CE
NET WEIGHT/GROSS WEIGHT	15.0/17.0kg
PACKING	67.0*67.0*25cm

REV.	DESCRIPTION	APPROVED	DATE	DRN. BY	CHD. BY	ENG. BY	APP. BY	SIGN	DATE

TITLE

RW4-630 400V IMEVÄ

PROJECTION

A4
SCALE
SHEET: of