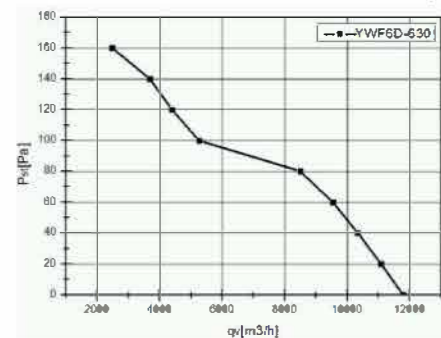


UNIT	Axial fan motor
MOTOR	Three phases motor
MOTOR TYPE	RW6-630 400V PUHALTAVA
VOLTAGE (V)	400
FREQUENCY (Hz)	50
INPUT POWER (W)	430
CURRENT (A)	1.35
SPEED (r/min)	930
AIR FLOW 20Pa (m³/h)	11080
NOISE (dBA)	71
CAPACITOR (µ F/450V)	-
ROTATION	CCW ,looking into the end-shield
INSULATION CLASS	B
MOTOR PROTECTION	Thermocontact 135±5°C
TEMPERATURE RISE	75K max
PROTECTION CLASS	IP54
OPERATING TYPE	s1
AMBIENT TEMPERATURE	-30°C +60°C
BEARINGS	Ball bearings
MOUNTING TYPE	Horizontal or Vertical
ELECTRICAL CONNECTION	Lead wire Silicon 4G 0.75mm <sup>2</sup> +2G 0.30mm <sup>2</sup> ,Length 100mm in terminal box connected (40.75mm <sup>2</sup> +20.30mm 100mm)
APPROVALS	CCC, CE
NET WEIGHT/GROSS WEIGHT	15.0/17.0kg
PACKING	67.0*67.0*25cm

**LABEL :**

**Axial Fan Motor**  
**RW6-630 400V PUHALTAVA**  
 400V 50Hz 1.35A 290/435W 930r/min  
 CL.B XX/XX CE

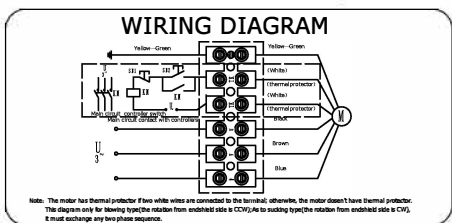
**FLOW RATE CURVE :**



**ErP2015 LABEL:**

ErP2015 (N40)  
 N=46.48  $\eta_{statA} = 40.1\%$   
**RW6-630 400V PUHALTAVA**

**WIRING DIAGRAM :**



						SIGN	DATE		
						DRN. BY			TITLE <b>RW6-630 400V PUHALTAVA</b>  PROJECTION
						CHD. BY			
						ENG. BY			
						APP. BY			
REV.	DESCRIPTION	APPROVED	DATE						A4 SCALE SHEET: of