



Compressor  
Voltage Code : TZ

**TAG4534Y**

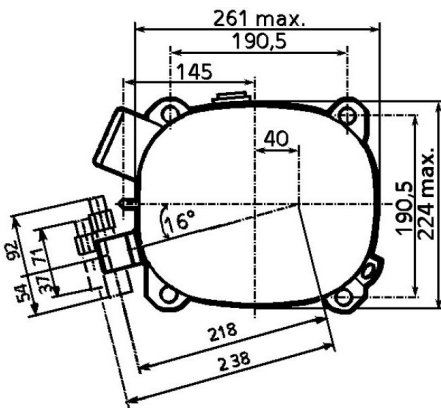
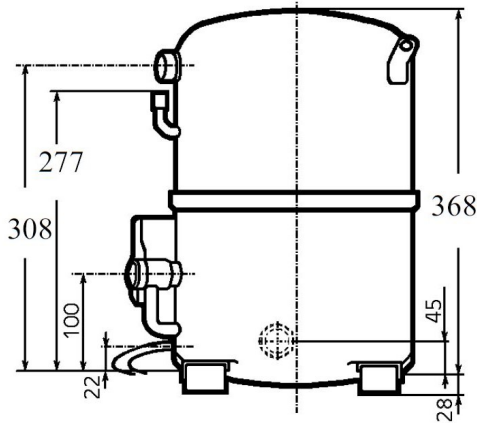
High Temp. Commercial (HP)

400V 3~ 50Hz / 440V 3~ 60 Hz

R134a

AGB4534YTZ

Conditions	Frequency	Nominal Cooling Capacity		Sound Power ISO3745 / ISO 3743-1
		Watts	BTU/h	
EN12900 / R134a	50 Hz / 60 Hz	7337 / 8635	25020 / 29446	73 dBA



<b>Displacement (cc)</b>	100.7
<b>Net Weight (Kg)</b>	44.0
<b>Oil Quantity (cc)</b>	1760.0
<b>Oil Type</b>	Polyolester
<b>Expansion Device</b>	Capillary_Tube/Expansion_Valve
<b>Cooling</b>	Fan
<b>Main Winding (Ohm)</b>	4.3
<b>Current</b>	
RLA (A)	4.7   5.4
MCC (A)	10.4   10.6
LRA (A)	41   44
<b>Electrical Equipment</b>	TRI
<b>Overload</b>	Interne
<b>Refrigerating connection for OD</b>	
Suction Tube	22.2 (7/8")
Discharge Tube	15.9 (5/8")
Process Tube	6.35 (1/4")

\* EN12900 : T°Cond. 50.0°C / T°Evap. 5.0°C / T°Return gas temp.. 20.0°C  
T°Subcooling. 0.0K

Certificates :



Note : Tecumseh reserves the right to change information contained in this document without notification.



**Tecumseh**

<b>TAG4534Y</b>	<b>Tension TZ : 400V 3~ 50Hz / 440V 3~ 60 Hz</b>
-----------------	--

Les performances sont données dans les **conditions EN12900** :  
 Condition Dew  
 The performance data are in **EN12900 conditions** :  
 Dew Condition

Gaz aspirés : 20.0 °C  
 Sous refroidissement : 0.0 K  
 Return gas : 20.0 °C  
 Subcooling : 0.0 K

<b>50 Hz R134a</b>											
											<b>N°217EU-T</b>
4   T condensation	5   T évaporation	(°C)	<b>-25</b>	<b>-20</b>	<b>-15</b>	<b>-10</b>	<b>-5</b>	<b>0</b>	<b>5</b>	<b>10</b>	<b>15</b>
<b>30</b>	1   P frigorifique	(Watt)	1673	2368	3368	4659	6228	8064	10154	12486	15049
	2   P absorbée	(W)	799	1121	1410	1664	1884	2070	2222	2340	2423
	3   I absorbée	(A)	2.53	2.92	3.27	3.59	3.86	4.09	4.28	4.42	4.53
<b>40</b>	1   P frigorifique	(Watt)	1372	1942	2793	3913	5287	6901	8744	10802	13062
	2   P absorbée	(W)	783	1112	1420	1706	1972	2216	2440	2642	2823
	3   I absorbée	(A)	2.52	2.91	3.28	3.63	3.95	4.25	4.53	4.79	5.02
<b>50</b>	1   P frigorifique	(Watt)		1512	2216	3165	4344	5739	7337	9123	11082
	2   P absorbée	(W)		1103	1430	1749	2060	2363	2658	2945	3224
	3   I absorbée	(A)		2.90	3.29	3.67	4.05	4.42	4.79	5.15	5.51
<b>60</b>	1   P frigorifique	(Watt)			1636	2415	3401	4579	5934	7450	9113
	2   P absorbée	(W)			1440	1791	2148	2509	2876	3248	3624
	3   I absorbée	(A)			3.30	3.72	4.15	4.59	5.05	5.52	6.01

<b>60 Hz R134a</b>											
											<b>N°217EU-T</b>
4   T condensation	5   T évaporation	(°C)	<b>-25</b>	<b>-20</b>	<b>-15</b>	<b>-10</b>	<b>-5</b>	<b>0</b>	<b>5</b>	<b>10</b>	<b>15</b>
<b>30</b>	1   P frigorifique	(Watt)	1949	2809	4011	5540	7383	9524	11951	14650	17607
	2   P absorbée	(W)	889	1298	1666	1991	2275	2517	2718	2877	2994
	3   I absorbée	(A)	2.31	2.74	3.14	3.52	3.87	4.19	4.49	4.77	5.01
<b>40</b>	1   P frigorifique	(Watt)	1593	2301	3327	4653	6266	8151	10291	12674	15283
	2   P absorbée	(W)	873	1288	1677	2041	2381	2695	2984	3248	3487
	3   I absorbée	(A)	2.32	2.73	3.15	3.56	3.97	4.37	4.77	5.16	5.55
<b>50</b>	1   P frigorifique	(Watt)		1790	2639	3764	5150	6778	8635	10704	12968
	2   P absorbée	(W)		1278	1689	2092	2487	2873	3251	3620	3981
	3   I absorbée	(A)		2.73	3.16	3.60	4.06	4.54	5.04	5.55	6.09
<b>60</b>	1   P frigorifique	(Watt)			1948	2873	4032	5408	6984	8742	10665
	2   P absorbée	(W)			1701	2143	2593	3051	3518	3992	4476
	3   I absorbée	(A)			3.17	3.64	4.16	4.71	5.31	5.95	6.62

1 = cooling capacity 2 = power input 3 = current 4 = condensing temperature 5 = evaporating temperature

**Nota : Tecumseh se réserve le droit de modifier les informations contenues dans ce document sans préavis.**

**Note : Tecumseh reserves the right to change information contained in this document without notification.**

© 2019 Tecumseh Products Company  
All rights reserved