



Compressor
Voltage Code : TZ

TAG4537Y

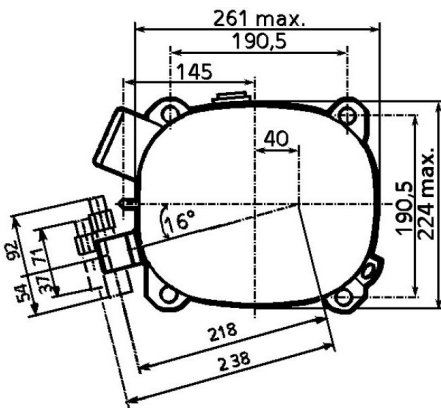
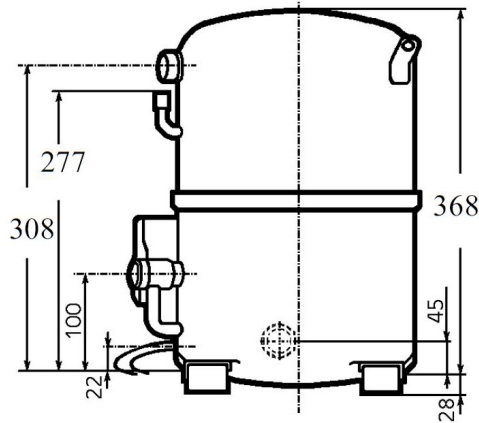
High Temp. Commercial (HP)

400V 3~ 50Hz / 440V 3~ 60 Hz

R134a

AGB4537YTZ

Conditions	Frequency	Nominal Cooling Capacity		Sound Power ISO3745 / ISO 3743-1
		Watts	BTU/h	
EN12900 / R134a	50 Hz / 60 Hz	8301 / 9770	28307 / 33315	74 dBA



Displacement (cc)	112.5
Net Weight (Kg)	44.0
Oil Quantity (cc)	1760.0
Oil Type	Polyolester
Expansion Device	Capillary_Tube/Expansion_Valve
Cooling	Fan
Main Winding (Ohm)	4.3
Current	
RLA (A)	5.4 6.4
MCC (A)	10 10
LRA (A)	40 44
Electrical Equipment	TRI
Overload	Interne
Refrigerating connection for OD	
Suction Tube	22.2 (7/8")
Discharge Tube	15.9 (5/8")
Process Tube	6.35 (1/4")

* EN12900 : T°Cond. 50.0°C / T°Evap. 5.0°C / T°Return gas temp.. 20.0°C
T°Subcooling. 0.0K

Certificates :



Note : Tecumseh reserves the right to change information contained in this document without notification.



Tecumseh

TAG4537Y	Tension TZ : 400V 3~ 50Hz / 440V 3~ 60 Hz
-----------------	--

Les performances sont données dans les **conditions EN12900** :
 Condition Dew
 The performance data are in **EN12900 conditions** :
 Dew Condition

Gaz aspirés : 20.0 °C
 Sous refroidissement : 0.0 K
 Return gas : 20.0 °C
 Subcooling : 0.0 K

© 2019 Tecumseh Products Company
All rights reserved

50 Hz R134a

N°217GU-T

4 T condensation	5 T évaporation	(°C)	-25	-20	-15	-10	-5	0	5	10	15
30	1 P frigorifique	(Watt)	2120	2860	3947	5368	7108	9152	11488	14101	16977
	2 P absorbée	(W)	948	1295	1606	1880	2118	2319	2484	2612	2704
	3 I absorbée	(A)	2.55	2.99	3.39	3.75	4.07	4.35	4.58	4.77	4.93
40	1 P frigorifique	(Watt)	1738	2345	3274	4508	6033	7833	9893	12198	14735
	2 P absorbée	(W)	930	1284	1617	1927	2216	2482	2727	2949	3150
	3 I absorbée	(A)	2.55	2.98	3.40	3.80	4.17	4.52	4.86	5.17	5.46
50	1 P frigorifique	(Watt)		1827	2597	3646	4957	6514	8301	10302	12501
	2 P absorbée	(W)		1274	1628	1975	2315	2646	2970	3287	3596
	3 I absorbée	(A)		2.98	3.41	3.84	4.27	4.70	5.13	5.56	5.99
60	1 P frigorifique	(Watt)			1917	2782	3881	5198	6714	8413	10278
	2 P absorbée	(W)			1640	2023	2413	2810	3214	3625	4043
	3 I absorbée	(A)			3.42	3.89	4.37	4.88	5.41	5.96	6.53

60 Hz R134a

N°217GU-T

4 T condensation	5 T évaporation	(°C)	-25	-20	-15	-10	-5	0	5	10	15
30	1 P frigorifique	(Watt)	2478	3394	4701	6384	8425	10810	13521	16544	19864
	2 P absorbée	(W)	1120	1547	1935	2283	2591	2859	3088	3277	3427
	3 I absorbée	(A)	2.41	2.90	3.37	3.82	4.24	4.64	5.01	5.36	5.69
40	1 P frigorifique	(Watt)	2025	2781	3899	5362	7151	9251	11644	14313	17241
	2 P absorbée	(W)	1103	1536	1948	2340	2711	3061	3391	3701	3989
	3 I absorbée	(A)	2.43	2.90	3.38	3.86	4.34	4.83	5.32	5.81	6.30
50	1 P frigorifique	(Watt)		2164	3093	4337	5876	7693	9770	12088	14628
	2 P absorbée	(W)		1526	1962	2397	2831	3264	3695	4124	4552
	3 I absorbée	(A)		2.90	3.39	3.90	4.45	5.02	5.62	6.25	6.90
60	1 P frigorifique	(Watt)			2283	3310	4601	6138	7902	9872	12029
	2 P absorbée	(W)			1976	2455	2952	3466	3998	4548	5115
	3 I absorbée	(A)			3.40	3.95	4.55	5.21	5.92	6.69	7.51

1 = cooling capacity 2 = power input 3 = current 4 = condensing temperature 5 = evaporating temperature

Nota : Tecumseh se réserve le droit de modifier les informations contenues dans ce document sans préavis.

Note : Tecumseh reserves the right to change information contained in this document without notification.