

Condensing unit
Voltage Code : TZ

TAGT4543YHR-TZ

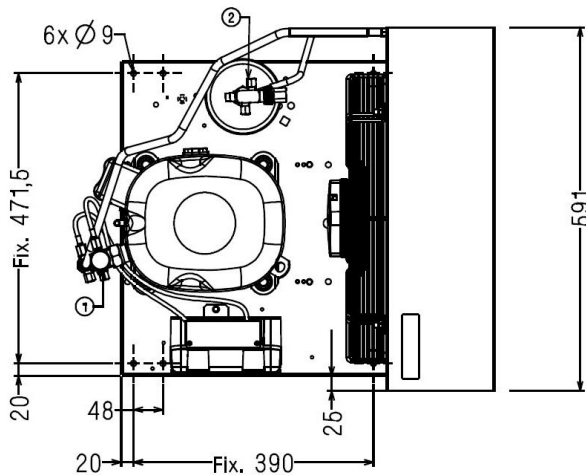
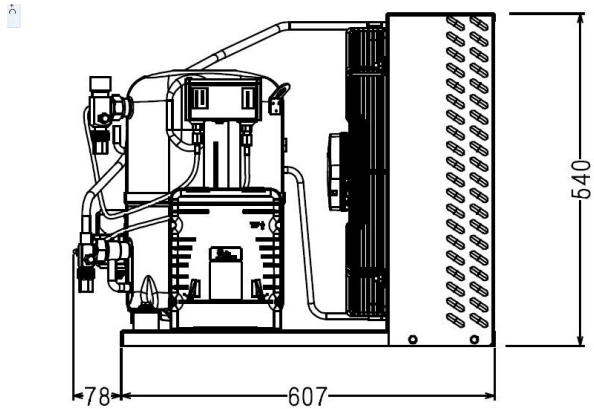
High Temp. Commercial (HP)

400V 3~ 50Hz / 440V 3~ 60 Hz

R134a

TAGT4543YHR-TZ

Conditions	Frequency	Nominal Cooling Capacity		Sound Power ISO3745 / ISO 3743-1
		Watts	BTU/h	
EN13215 / R134a	50 Hz / 60 Hz	4734 / 5219	16145 / 17796	81 dBA



* EN13215 : T°Ambient 32.0°C / T°Evap. -10.0°C / T°Return gas temp.. 20.0°C
T°Subcooling. 3.0K

Net Weight (Kg)	76.0
Expansion device	Expansion_Valve
Air Flow (m³/h)	3300 / 3650
Compo Data Sheet	217JU-T
Elec Comp Type	TRI
Current (Amp)	
Load Rated Amp	6.4 7.2
Max Cont Current	11.1 12.5
Lock Rotor Amp	44 47
Fan	
Speed (rpm)	1360 / 1520
Power (W)	280.0
Diameter (mm)	420
Protection	Overload
IP Level	IP54
Condenser	M420/24000
Liquid Receiver	
Capacity (L)	2.35
Maximum Pressure (Bars)	32.0
Suction Line	
Suction Type	Vanne Orientable
For Tubing Out Diam	22.2 (7/8")
Suction Connection Type	Brased
Liquid Line	
Liquid Line Type	Vanne Orientable
For Tubing Out Diam	9.52
Liquid Connecton Type	Brased
Connection Type	VR
Fan Guard	maille < à 8mm


Note : Tecumseh reserves the right to change information contained in this document without notification.



Tecumseh

TAGT4543YHR-TZ	Tension TZ : 400V 3~ 50Hz / 440V 3~ 60 Hz
-----------------------	--

Les performances sont données dans les conditions EN13215 :	Gaz aspirés :	20.0 °C
Condition Dew	Sous refroidissement :	3.0 K
The performance data are in EN13215 conditions :	Return gas :	20.0 °C
Dew Condition	Subcooling :	3.0 K

50 Hz R134a											
N°6632											
											
5 T ambience	6 T évaporation	(°C)	-25	-20	-15	-10	-5	0	5	10	15
25	1 P frigorifique	(Watt)	2724	3232	4115	5312	6757	8386	10137	11957	13810
	2 P absorbée	(W)	1315	1697	2051	2390	2732	3097	3506	3979	4531
	3 I absorbée	(A)	3.96	4.40	4.81	5.23	5.67	6.15	6.72	7.38	8.18
	4 Tc	(°C)	31.0	32.0	33.7	35.9	38.6	41.5	44.7	47.9	51.1
32	1 P frigorifique	(Watt)		2854	3646	4734	6058	7556	9173	10861	12589
	2 P absorbée	(W)		1691	2059	2422	2796	3200	3653	4172	4769
	3 I absorbée	(A)		4.39	4.82	5.26	5.73	6.26	6.88	7.61	8.46
	4 Tc	(°C)		38.8	40.3	42.3	44.8	47.5	50.4	53.3	56.2
43	1 P frigorifique	(Watt)			2904	3825	4960	6254	7662	9144	
	2 P absorbée	(W)			2071	2472	2897	3363	3884	4475	
	3 I absorbée	(A)			4.83	5.31	5.84	6.44	7.14	7.96	
	4 Tc	(°C)			50.7	52.4	54.5	56.9	59.4	61.9	

60 Hz R134a											
N°6632											
5 T ambience	6 T évaporation	(°C)	-25	-20	-15	-10	-5	0	5	10	15
25	1 P frigorifique	(Watt)	2772	3417	4487	5936	7715	9772	12065	14562	17251
	2 P absorbée	(W)	1550	1998	2434	2874	3341	3863	4467	5180	6025
	3 I absorbée	(A)	4.20	4.66	5.15	5.67	6.26	6.95	7.77	8.77	9.96
	4 Tc	(°C)	34.2	35.1	36.6	38.7	41.3	44.1	47.2	50.3	53.4
32	1 P frigorifique	(Watt)		2949	3904	5219	6847	8744	10872	13207	15743
	2 P absorbée	(W)		1994	2445	2914	3423	3997	4661	5439	6350
	3 I absorbée	(A)		4.67	5.15	5.70	6.33	7.07	7.96	9.03	10.3
	4 Tc	(°C)		42.0	43.4	45.3	47.7	50.3	53.1	55.9	58.7
43	1 P frigorifique	(Watt)			2985	4089	5482	7128	8999		
	2 P absorbée	(W)			2462	2977	3553	4209	4968		
	3 I absorbée	(A)			5.16	5.74	6.44	7.27	8.26		
	4 Tc	(°C)			54.1	55.7	57.7	59.9	62.3		

1 = cooling capacity 2 = power input 3 = current 4 = condensing temperature 5 = ambient temperature 6 = evaporating temperature

Nota : Tecumseh se réserve le droit de modifier les informations contenues dans ce document sans préavis.

Note : Tecumseh reserves the right to change information contained in this document without notification.

© 2019 Tecumseh Products Company
All rights reserved