



Compressor  
Voltage Code : TZ

TAJ4492Y-TZ

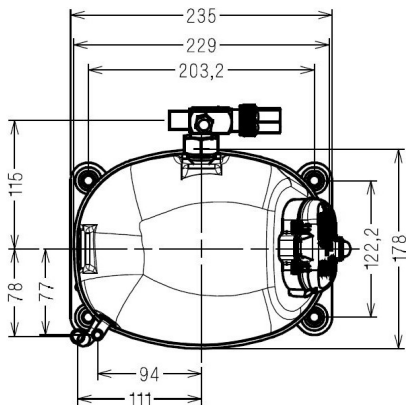
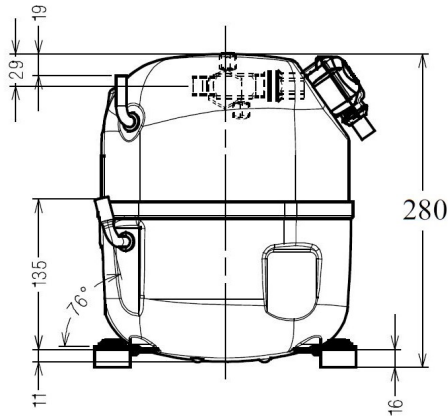
High Temp. Commercial (HP)

400V 3~ 50Hz / 440V 3~ 60 Hz

R134a

AJ4492Y-TZ1C

Conditions	Frequency	Nominal Cooling Capacity		Sound Power ISO3745 / ISO 3743-1
		Watts	BTU/h	
EN12900 / R134a	50 Hz / 60 Hz	2177 / 2451	7425 / 8358	58 dBA



<b>Displacement (cc)</b>	25.95
<b>Net Weight (Kg)</b>	19.0
<b>Oil Quantity (cc)</b>	475.0
<b>Oil Type</b>	Polyolester
<b>Expansion Device</b>	Capillary_Tube/Expansion_Valve
<b>Cooling</b>	Fan
<b>Main Winding (Ohm)</b>	16.9
<b>Current</b>	
RLA (A)	1.7   1.7
MCC (A)	3.5   3.6
LRA (A)	12.6   12.8
<b>Electrical Equipment</b>	TRI
<b>Overload</b>	Interne
<b>Refrigerating connection for OD</b>	
Suction Tube	12.7 (1/2")
Discharge Tube	7.9 (5/16")
Process Tube	6.35 (1/4")

\* EN12900 : T°Cond. 50.0°C / T°Evap. 5.0°C / T°Return gas temp.. 20.0°C  
T°Subcooling. 0.0K

Certificates :



Note : Tecumseh reserves the right to change information contained in this document without notification.



**Tecumseh**

<b>TAJ4492Y-TZ</b>	<b>Tension TZ : 400V 3~ 50Hz / 440V 3~ 60 Hz</b>
--------------------	--

Les performances sont données dans les <b>conditions EN12900</b> :	Gaz aspirés :	20.0 °C
Condition Dew	Sous refroidissement :	0.0 K
The performance data are in <b>EN12900 conditions</b> :	Return gas :	20.0 °C
Dew Condition	Subcooling :	0.0 K

© 2019 Tecumseh Products Company  
All rights reserved

### 50 Hz R134a

**N°214LU-TZ**

4   T condensation	5   T évaporation	(°C)	-25	-20	-15	-10	-5	0	5	10	15
<b>30</b>	1   P frigorifique	(Watt)	615	858	1150	1498	1910	2394	2957	3607	4353
	2   P absorbée	(W)	385	447	503	553	600	643	685	727	768
	3   I absorbée	(A)	4.61	4.98	5.35	5.71	6.07	6.42	6.76	7.07	7.37
<b>40</b>	1   P frigorifique	(Watt)	458	685	952	1266	1636	2069	2572	3154	3823
	2   P absorbée	(W)	369	453	528	597	660	719	775	828	881
	3   I absorbée	(A)	4.79	5.27	5.76	6.26	6.76	7.27	7.77	8.27	8.76
<b>50</b>	1   P frigorifique	(Watt)		504	746	1026	1353	1734	2177	2691	3282
	2   P absorbée	(W)		429	529	621	705	784	858	929	997
	3   I absorbée	(A)		5.47	6.09	6.74	7.40	8.07	8.75	9.44	10.1
<b>60</b>	1   P frigorifique	(Watt)			536	782	1066	1396	1779	2223	2737
	2   P absorbée	(W)			498	617	728	832	929	1021	1109
	3   I absorbée	(A)			6.31	7.10	7.93	8.78	9.66	10.5	11.5

### 60 Hz R134a

**N°214LU-TZ**

4   T condensation	5   T évaporation	(°C)	-25	-20	-15	-10	-5	0	5	10	15
<b>30</b>	1   P frigorifique	(Watt)	644	955	1307	1710	2173	2705	3317	4016	4814
	2   P absorbée	(W)	429	510	581	644	703	759	818	881	951
	3   I absorbée	(A)	1.13	1.21	1.29	1.36	1.43	1.49	1.55	1.61	1.67
<b>40</b>	1   P frigorifique	(Watt)	403	711	1050	1428	1857	2344	2900	3534	4256
	2   P absorbée	(W)	386	500	599	688	768	843	916	990	1068
	3   I absorbée	(A)	1.04	1.15	1.26	1.37	1.47	1.57	1.66	1.76	1.85
<b>50</b>	1   P frigorifique	(Watt)		447	769	1121	1513	1953	2451	3017	3659
	2   P absorbée	(W)		444	580	701	811	912	1007	1100	1193
	3   I absorbée	(A)		1.08	1.22	1.36	1.49	1.63	1.76	1.88	2.00
<b>60</b>	1   P frigorifique	(Watt)			482	805	1157	1547	1985	2480	3041
	2   P absorbée	(W)			513	675	821	956	1081	1201	1317
	3   I absorbée	(A)			1.16	1.33	1.50	1.66	1.83	1.99	2.14

1 = cooling capacity 2 = power input 3 = current 4 = condensing temperature 5 = evaporating temperature

**Nota : Tecumseh se réserve le droit de modifier les informations contenues dans ce document sans préavis.**

**Note : Tecumseh reserves the right to change information contained in this document without notification.**